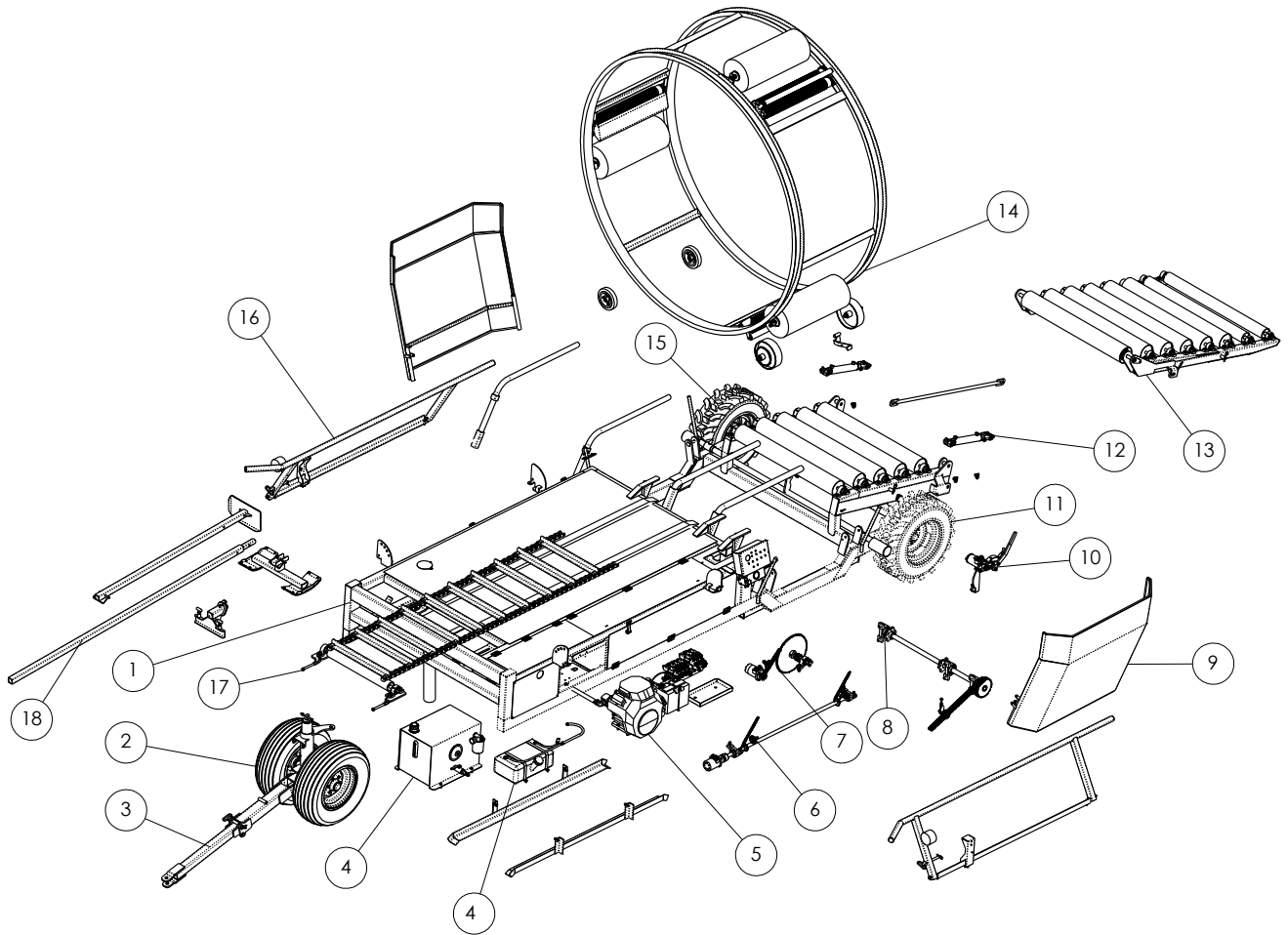


**Kemco**  
**Model 252 Bale Wrapper**

*Parts Manual*



MODEL #252 BALE WRAPPER

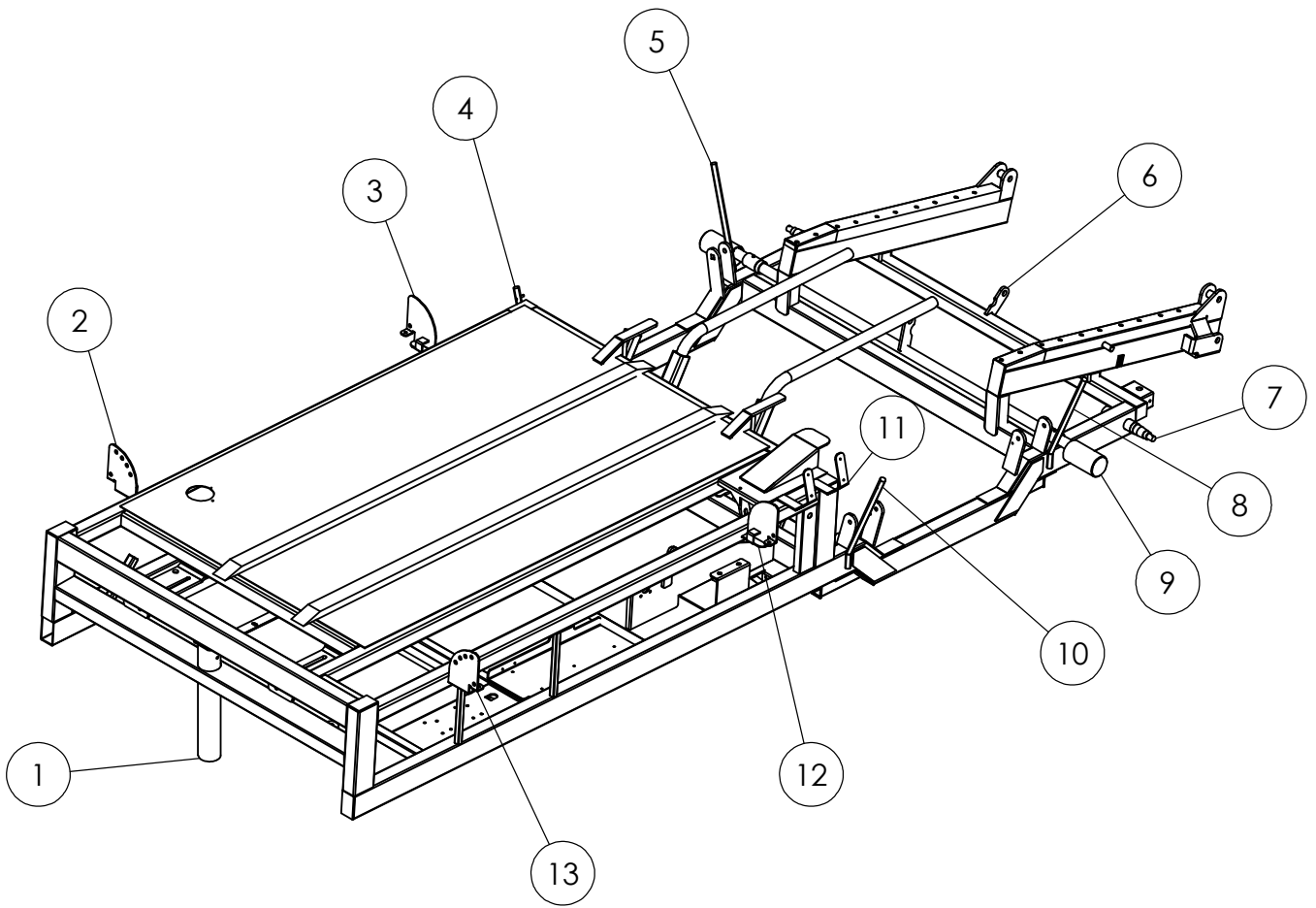
# Kemco Manufacturing, LLC

617 E. Plymouth St.

Bremen IN 46506

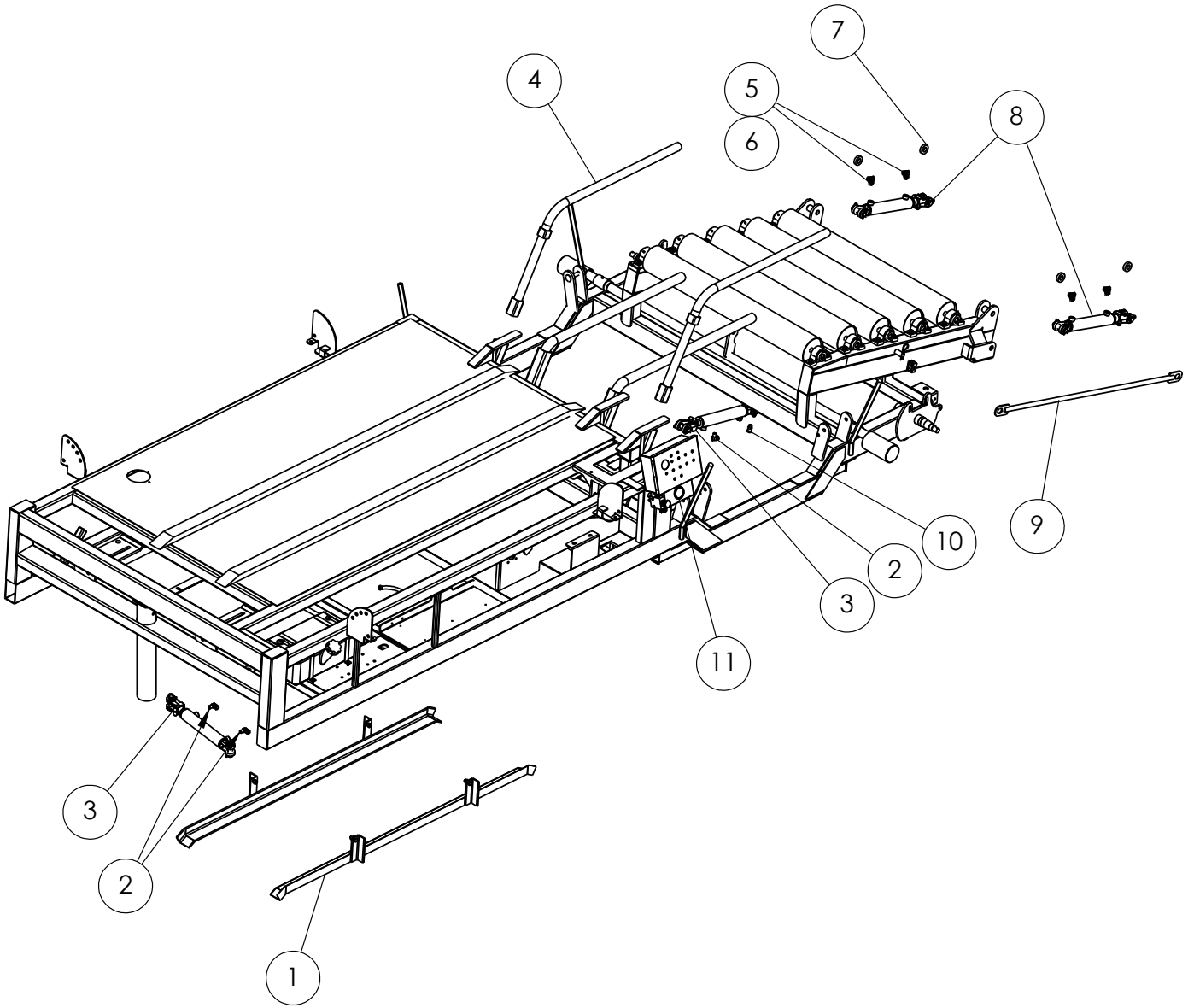
## Table of Contents

Key #		Page #
1	Frame Assemblies . . . . .	3
2	Front Wheels . . . . .	9
3	Tongue Assembly . . . . .	7
4	Hydraulic & Gas Tanks. . . . .	13
5	Engine Package & Hydraulic Controls . . . . .	17
6	Hoop Drive Shaft . . . . .	29
7	Jackshaft . . . . .	31
8	Web Drive Shaft. . . . .	33
9	Shields . . . . .	35
10	Drive Assembly . . . . .	39
11	Left Rear Wheel . . . . .	45
12	Cylinders (In frame assembly) . . . . .	5
13	Ramp & Tailgate. . . . .	49
14	Hoop . . . . .	53
15	Right Rear Wheel . . . . .	65
16	Bale Guides . . . . .	69
17	Web Chain . . . . .	71
18	Push-off Ram . . . . .	75
19	Decals . . . . .	79



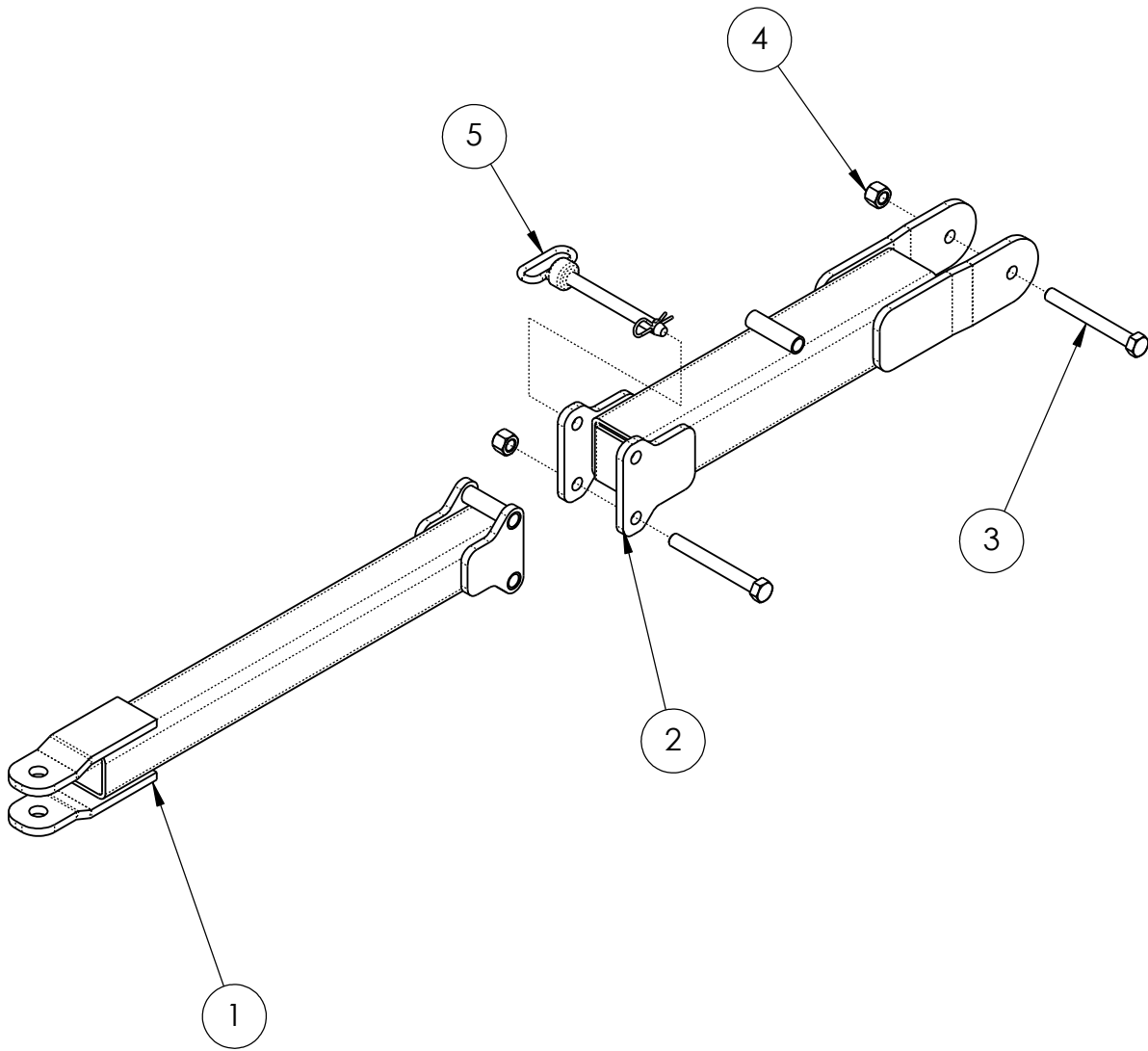
MODEL #252 BALE WRAPPER  
CHASSIS WELD PARTS

ITEM #	PART NUMBER	DESCRIPTION	QTY.	SERIAL #
1	KBW1176	TUBE, DOLLIE WHEEL FRAME	1	
2	KBW1028-RH	BRACKET, BALE GUIDE ARM	1	
3	KBW1029-RH	BRACKET, BALE GUIDE ARM	1	
4	KBW1156D-RH	HOOP SHIELD LATCH ROD, DRILLED, RH	1	-20160
	KBW1259-RH	HOOP SHIELD LATCH ROD, WELDED, RH		20161-
5	KBW1156-RH	HOOP SHIELD MOUNT, RH	1	
6	KBW1026	MOUNT, BRAKE RAM STATIONARY	1	
7	EM5000S	2' X 12" SPINDLE	2	
8	KBW1156	HOOP SHIELD MOUNT, LH	1	
9	KBW06	BRAKE ASSEMBLY	1	
10	KBW1156D	HOOP SHIELD LATCH ROD, DRILLED, LH	1	-20160
	KBW1259-LH	HOOP SHIELD LATCH ROD, WELDED, LH		20161-
11	KBW1096	MOUNT, CONTROL BOX	2	
12	KBW1029-LH	BRACKET, BALE GUIDE ARM	1	
13	KBW1028-LH	BRACKET, BALE GUIDE ARM	1	



MODEL #252 BALE WRAPPER  
MISC. REMOVABLE PARTS

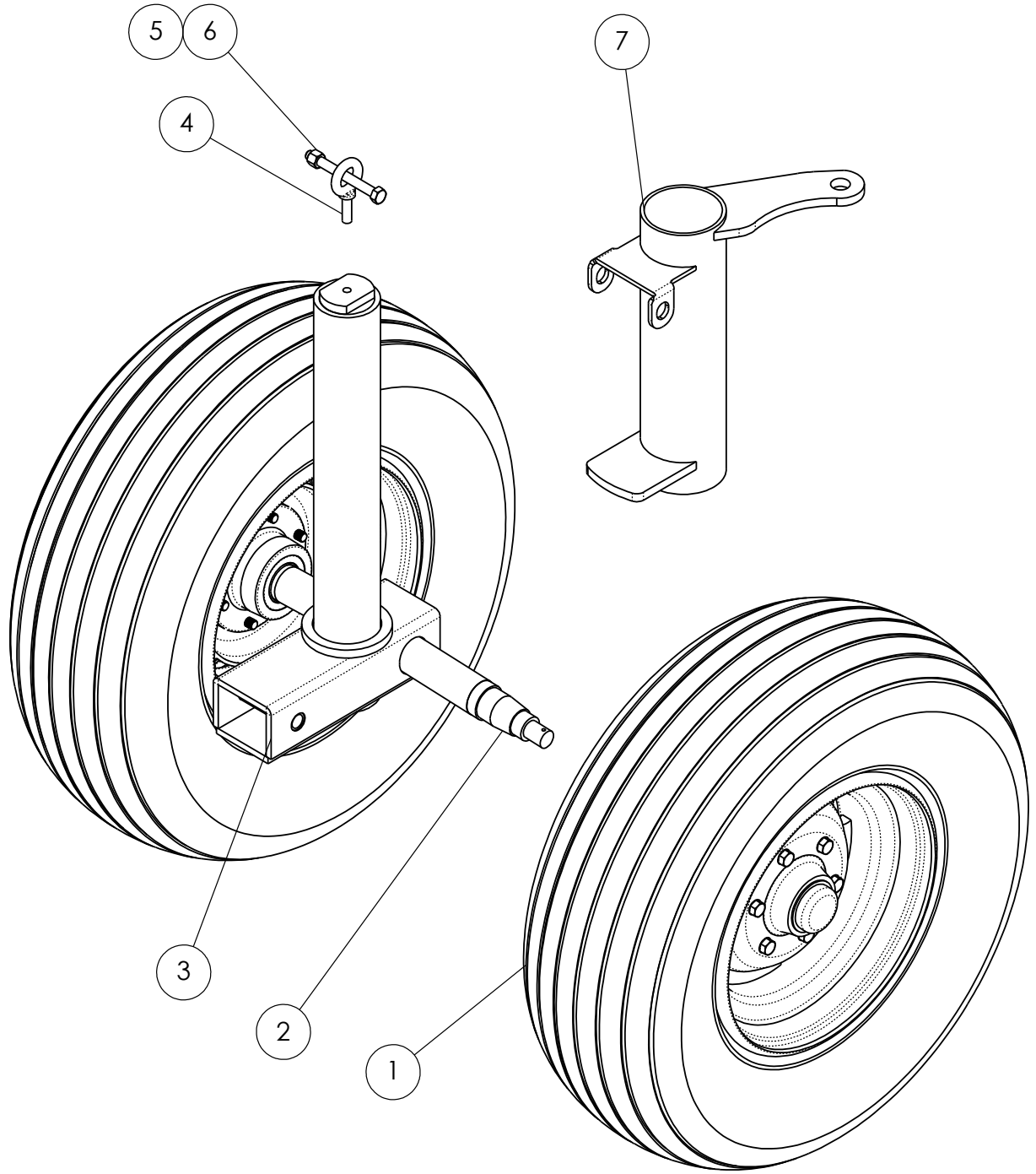
ITEM #	PART NUMBER	DESCRIPTION	QTY	SERIAL #
1	KBW WEB CARRIER	SEE PAGE #73	1	
2	Y-1501-F-R-6-6	ADAPTER, 90°, 3/8" MPT - 3/8" FPT SWIVEL	3	
3	DBH-2008-A	2" ROD X 8" STROKE HYDRAULIC CYLINDER	2	
4	KBW 1151	REMOVABLE SPEAR	2	
5	Y-6901-F-NW O-8-6	ADAPTER, 90°, 3/4" M O-RING - 3/8" FPT SWIVEL	4	
6	4000-906	SEAL, O-RING BOSS	4	
7	KBW 1085	WASHER, RAM SPACER	4	
8	287-005	2" ROD X 10" STROKE HYDRAULIC CYLINDER	2	
9	KBW 1154 TAILGATE ROD	WELDED ROD ASSEMBLY	1	
10	Y-1404-6-6	ADAPTER, STRAIGHT, 3/8" MPT - 3/8" FPT SWIVEL	1	
11	KBW048	CONTROL CONSOLE - SEE PAGE #23	1	



KBW03-252 TONGUE

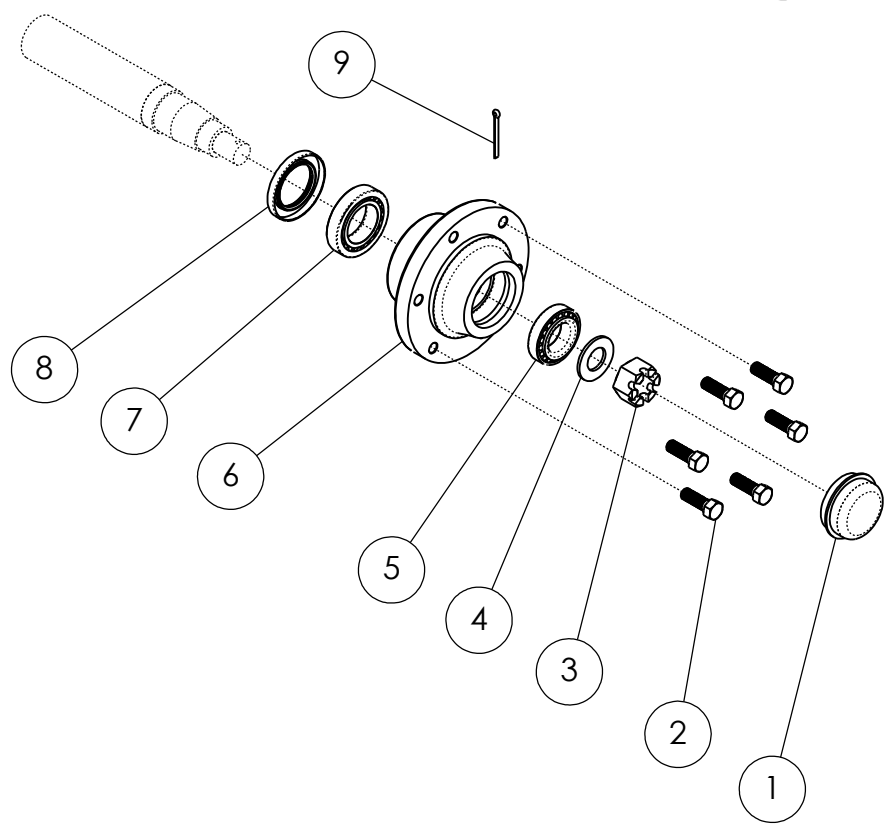
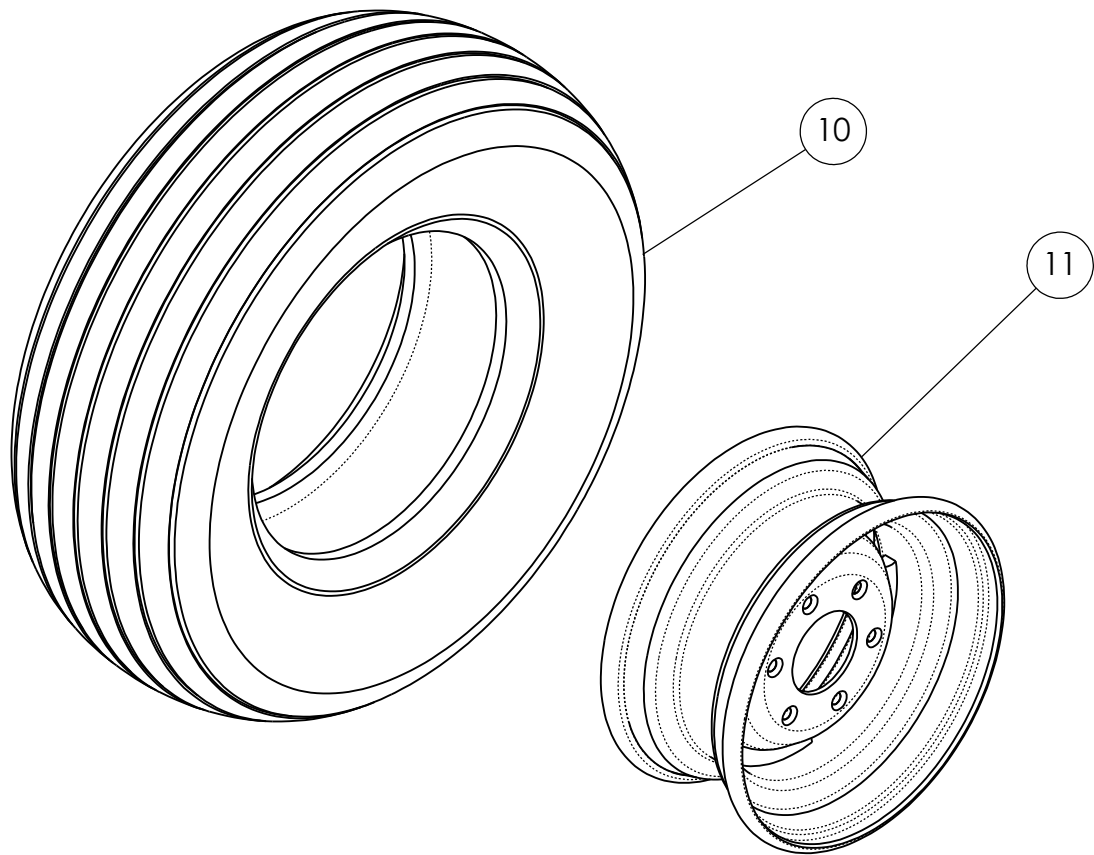


ITEM #	PART NUMBER	DESCRIPTION	QTY.	SERIAL #
1	KBW02	TONGUE FRONT HALF	1	
2	KBW01	TONGUE REAR HALF	1	
3	3/4 X 6-1/2 UNC	HEX BOLT, GRADE 5	2	
4	3/4-10 LN	NYLON LOCK NUT	2	
5	90022	PIN, 3/4"	1	



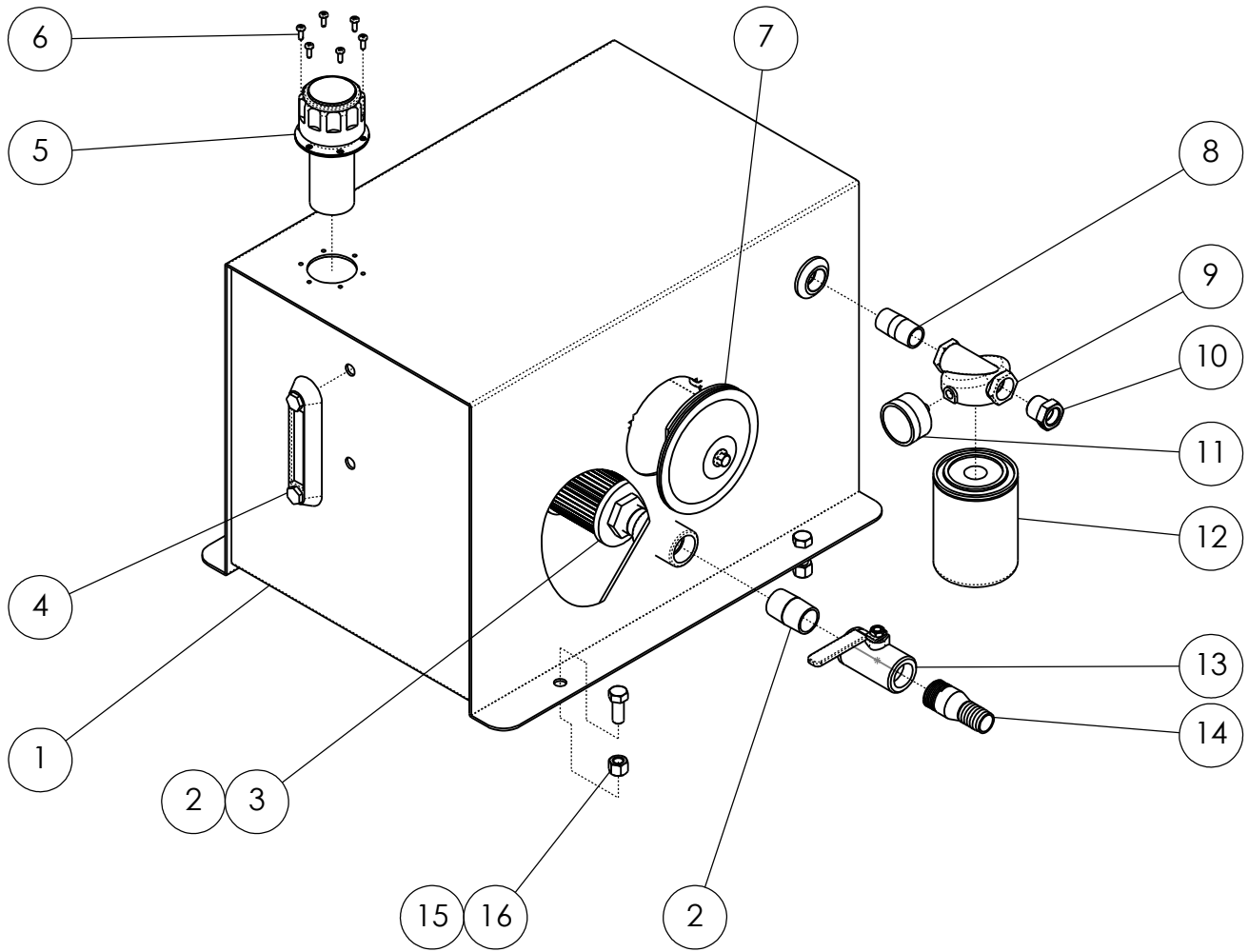
KBW07 STEER DOLLIE ASSEMBLY

ITEM #	PART NUMBER	DESCRIPTION	QTY.	SERIAL #
1	KBW023	ASSEMBLY, STEER WHEEL AND HUB - SEE PAGE # 11	2	
2	EM5000S	2" X 12" SPINDLE	2	
3	KBW071	STEER DOLLIE COMPLETE W/SPINDLES	1	
4	MSC73154874	EYEBOLT	1	
5	1/2 X 5 UNC	HEX BOLT, GRADE 5	1	
6	1/2-13 LN	LOCK NUT, NYLON INSERT	1	
7	KBW A07	STEERING TUBE	1	



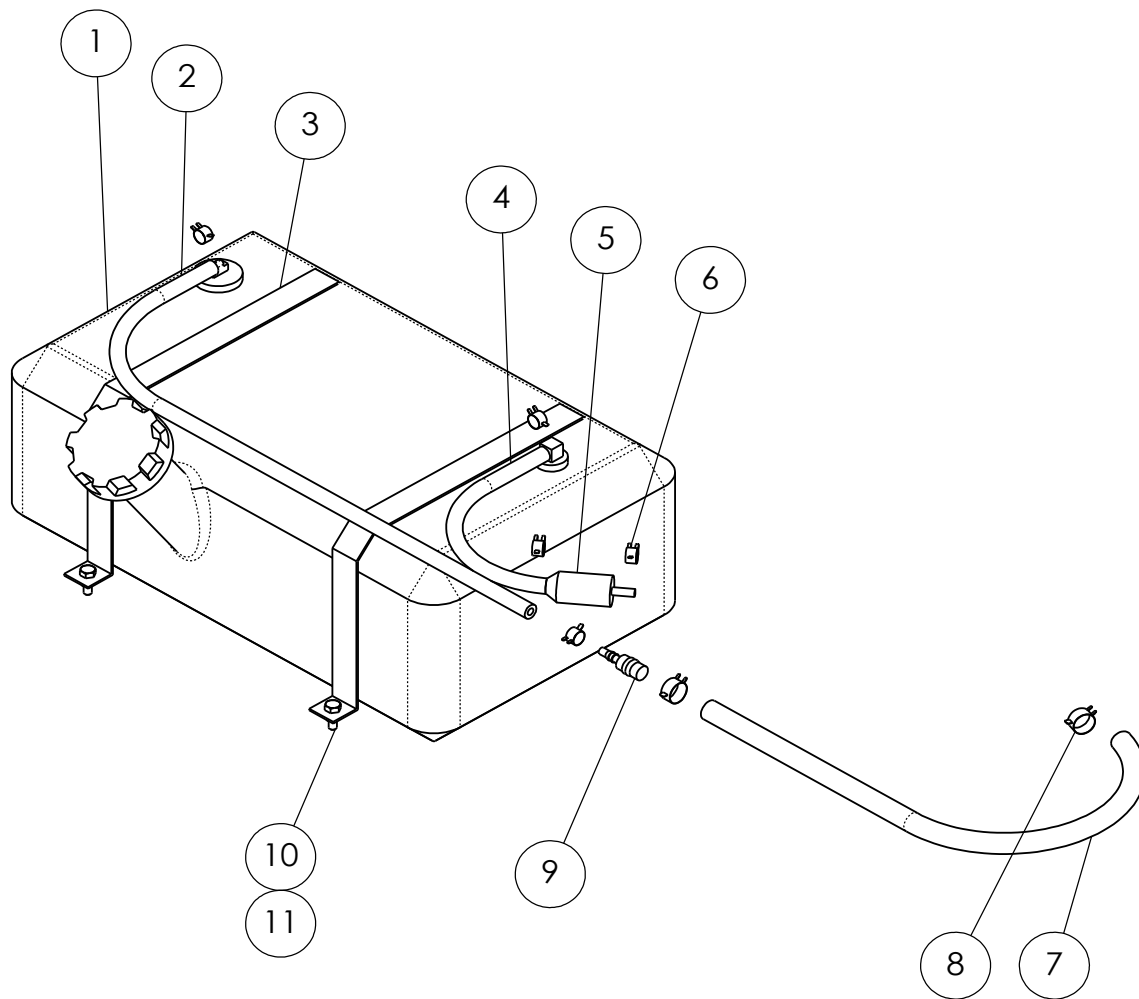
KBW023 WHEEL & HUB ASSEMBLY

ITEM #	PART NUMBER	DESCRIPTION	QTY.	SERIAL #
1	CAP 2.6	GREASE CAP, 2.56" OD	1	
2	LB 0.5-20	1/2-20 X 1-1/4 LUG BOLT	6	
3	1-12 SLOT	HEX SLOTTED NUT	1	
4	FW 1	FLAT WASHER, 1.062 X 2 X 0.134	1	
5	LM48548-LM48510	TAPERED ROLLER BEARING SET, 1.375 ID X 2.563 OD	1	
6	EM5000-6	6 BOLT HUB	1	
7	LM603049-LM603011	TAPERED ROLLER BEARING SET, 1.781 ID X 3.063 OD	1	
8	203063	GREASE SEAL, 2" ID X 3.066 OD	1	
9	CP-188X2000	3/16 X 2 COTTER PIN	1	
10	FC1D6	11L-15SL TIRE	1	
11	6 x 15	AG WHEEL 15x6x6	1	
12	TU552208	15" TUBE	1	
13	CL0108-098	LUBRIPLATE 3000, HI-TACK MOLYBDENUM GREASE	1	



KBW040 HYDRAULIC SUPPLY

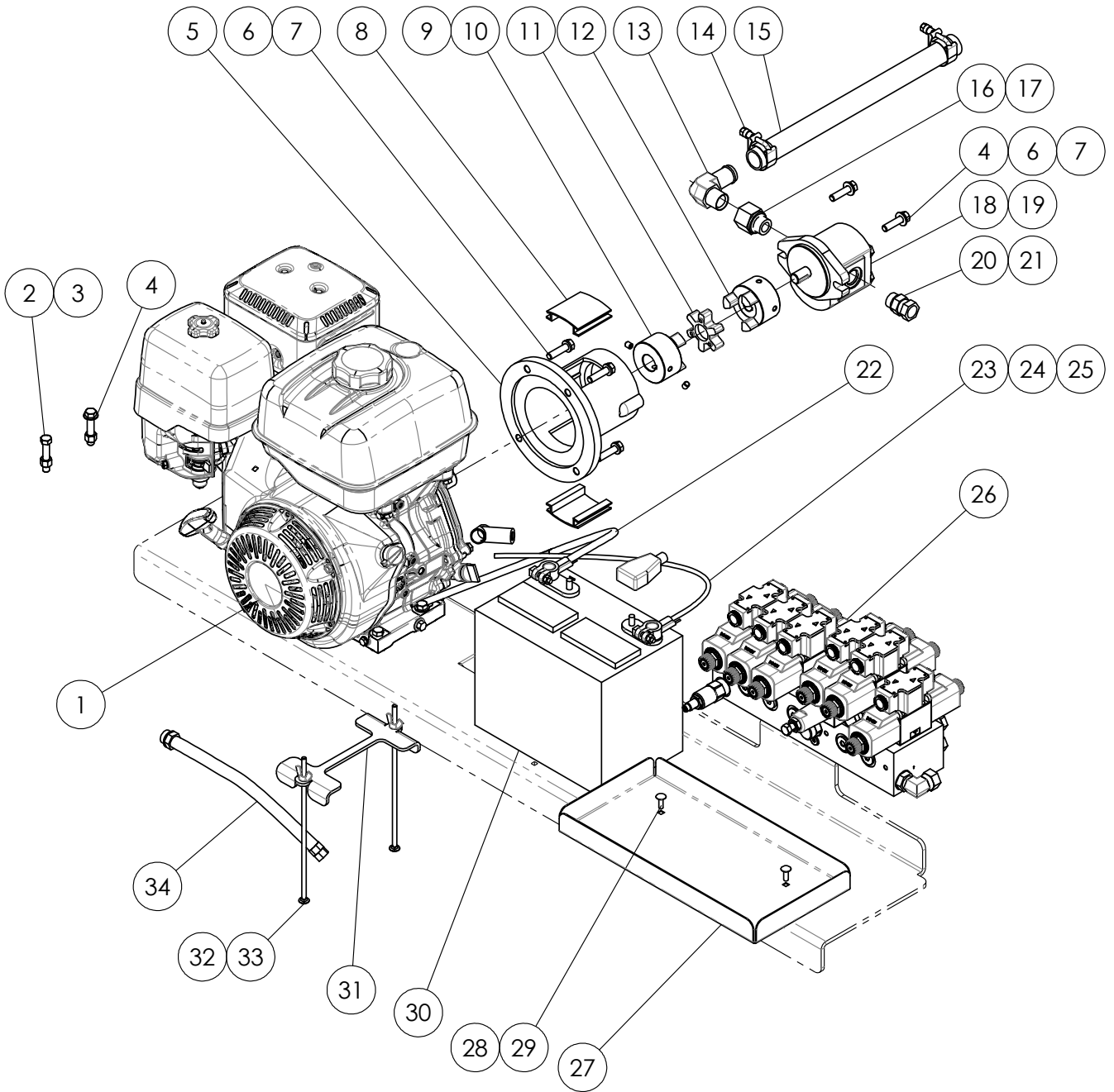
ITEM #	PART NUMBER	DESCRIPTION	QTY.	SERIAL #
1	KBW1118	HYDRAULIC TANK	1	
2	1 X 2 PIPE	CLOSE NIPPLE, SCH 40, GALVANIZED	2	-2520053
		NO LONGER REQUIRED		2520054-
3	SS.100.00	SUCTION STRAINER	1	
4	SG-05	SIGHT GLASS	1	
5	FBA-1-3S	FILL CAP STRAINER	1	-2520023
	FB10-04-1-00-0	FILL CAP STRAINER	1	2520024-
6		FLANGE HEAD SCREW, TRI-LOBE	6	-2520023
	10-32 X 3/8 CHST	PHILLIPS SCREW, SELF-TAPPING	6	2520024-
7	FRC-06-UP-BN	ACCESS COVER ASSEMBLY	1	
8	3/4 X 2 PIPE	CLOSE NIPPLE, SCH 40, GALVANIZED	1	-2520053
		NO LONGER REQUIRED		2520054-
9	ZAF07-25-1+3	FILTER HEAD	1	
10	Y-5406-12-8	STRAIGHT BUSHING, 3/4 MPT - 1/2 FPT	1	
11	CI-20	FILTER GAUGE	1	
12	AE-10	HYDRAULIC FILTER, 10 MICRON	1	
13	KTC-100	BALL VALVE, 1" NPT	1	
14	HCN-100	HOSE BARB	1	
15	1/2-13 X 1-1/4 UNC	HEX BOLT, GRADE 5	4	
16	1/2-13 LN	NYLON LOCK NUT	4	
17	TEFLON	THREAD SEAL TAPE	1	



KBW049 FUEL SUPPLY

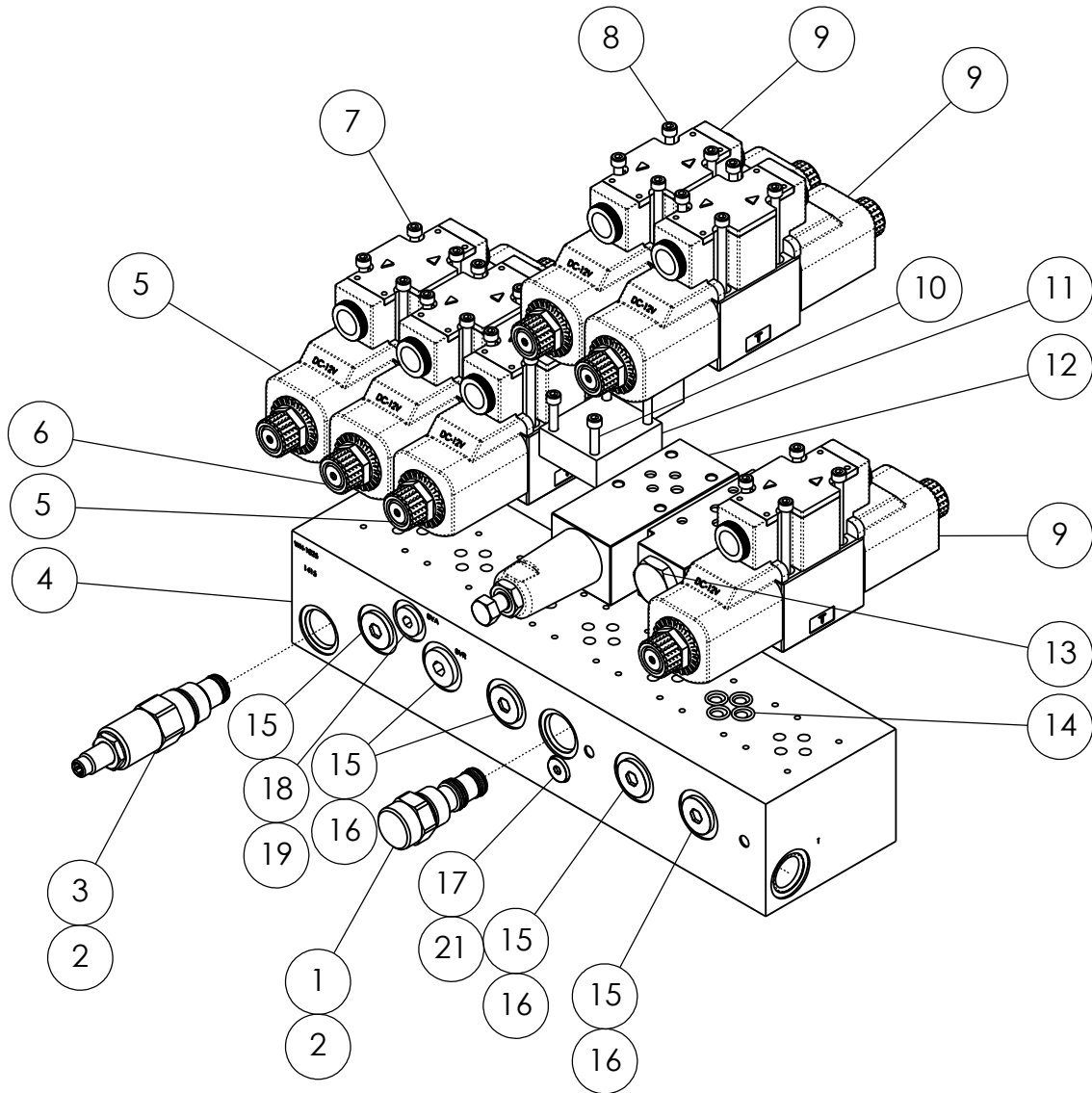


ITEM #	PART NUMBER	DESCRIPTION	QTY.	SERIAL #
1	EPA-FLM-BA1 071286AE	FUEL TANK FUEL TANK ASSEMBLY INCLUDES ITEMS EXCEPT #s 5,10, 11	1	20115- 20115- 20115-
2	CUT FROM 468851A	FUEL LINE HOSE, 1/4"	1	20115-
3	468998A	MOUNTING STRAP	2	20115-
4	CUT FROM 468851A	FUEL LINE HOSE, 1/4"	1	20115-
5	FF1	IN-LINE FUEL FILTER	1	20115-
6	468850A	SPRING HOSE CLAMP	5	20115-
7	468894A	FUEL LINE HOSE, 7/16"	1	20115-
8	468898A	SPRING HOSE CLAMP	2	20115-
9	462125A	HOSE BARB ADAPTER	1	20115-
10	1/4-20 X 3/4 UNC	HEX BOLT, GRADE 5	4	20115-
11	1/4-20 LN	LOCK NUT, NYLON INSERT	4	20115-



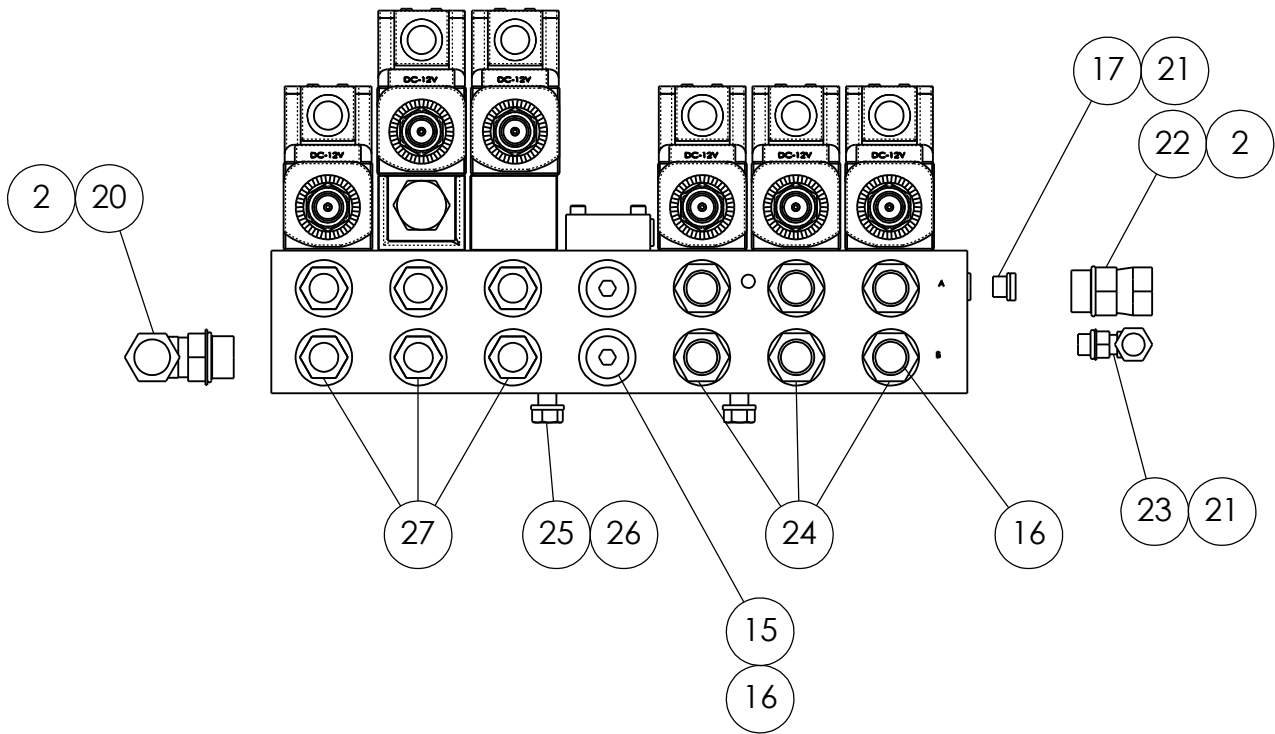
KBW025 POWER PACKAGE

ITEM #	PART NUMBER	DESCRIPTION	QTY.	SERIAL #
1	GX390	GASOLINE ENGINE, 13HP, HONDA	1	-20114
	GX630	GASOLINE ENGINE, 20HP, HONDA	1	20115-
2	3/8-16 X 2 UNC	HEX BOLT, GRADE 5	4	
3	3/8-16 LN	LOCK NUT, NYLON INSERT	4	
4	3/8 FW	FLAT WASHER	2	
5	G300-402-5.125	PUMP MOUNT	1	
6	3/8 LW	SPRING LOCK WASHER	4	
7	3/8-16 X 1-1/2 UNC	HEX BOLT, GRADE 5	4	
8	AC300	MOUNT COVER	2	
9	5/16-18 X 3/8 SS	SET SCREW	4	
10	L100-N-1KW	COUPLING HUB, 1" ID	1	
11	L100N	COUPLING SPIDER	1	
12	L100-N-5_8KW	COUPLING HUB, 5/8" ID	1	
13	Y-4501	BEADED HOSE ADAPTER, 1" TUBE - 3/4" MPT	1	
14	HC100	T-BOLT HOSE CLAMP, Ø1-1/2" NOMINAL	2	
15	S1	SUCTION HOSE	1	
16	Y-6405-O-12-12	ADAPTER, 3/4" FPT - 1-1/16" M O-RING	1	
17	4000-912	SEAL, O-RING BOSS	1	
18	2GG1U08R	HYDRAULIC GEAR PUMP	1	
19	5/32 X 3/4 WK	WOODRUFF KEY, FULL RADIUS	1	
20	Y-6900-O-10-8	ADAPTER, 7/8" M O-RING - 1/2" FPT SWIVEL	1	
21	4000-910	SEAL, O-RING BOSS	1	
22	781103	BATTERY CABLE, NEGATIVE, CLAMP TYPE	1	
23	781131	BATTERY CABLE, POSITIVE, CLAMP TYPE	1	
24	73127813	BATTERY TERMINAL COVER	1	
25	73127995	SOLENOID TERMINAL COVER	1	
26	KBW044	HYDRAULIC CONTROL MANIFOLD - SEE PG #19	1	
27	KBW1115	TOOLBOX CRADLE	1	
28	1/4-20 LN	LOCK NUT, NYLON INSERT	2	
29	CB 1/4-20 X 3/4	CARRIAGE BOLT, GRADE 5	2	
30	8240	12 VOLT BATTERY	1	
31	KBW1024	CLAMP, BATTERY	1	
32	5-16 WING NUT SS	SS WING NUT, 5/16"	2	
33	FC20480	BATTERY BOLT	2	
34	H1012	OIL DRAIN	1	-20114
	HON1420	OIL DRAIN	1	20115-



KBW044 HYDRAULIC CONTROL MANIFOLD - VALVES

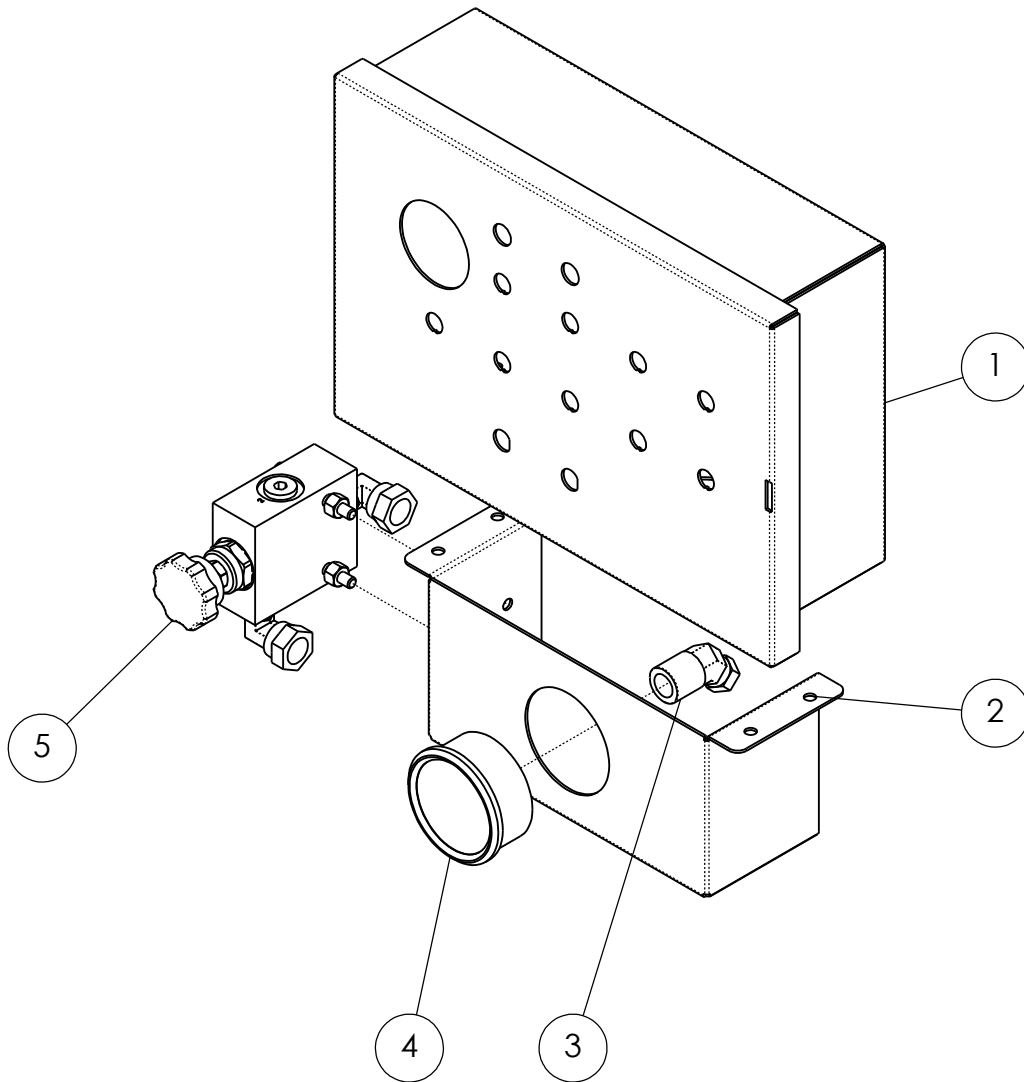
ITEM #	PART NUMBER	DESCRIPTION	QTY.	SERIAL #
1	FR10-3xF	FLOW CONTROL VALVE	1	
2	4000-910	SEAL, O-RING BOSS	4	
3	RV10-2xA	RELIEF VALVE	1	
4	WH1025	HYDRAULIC MANIFOLD	1	
5	HD-3C3-G02-LW-F-12VDC	D03 SOLENOID VALVE	2	
6	HD-2B3B-G02-LW-F-12VDC	D03 SOLENOID VALVE	1	
7	10-24 X 1-3/4 SHCS	SOCKET HEAD CAP SCREW	16	
8	10-24 X 3-1/2 SHCS	SOCKET HEAD CAP SCREW	8	
9	HD-3C6-G02-LW-F-12VDC	D03 SOLENOID VALVE	3	
10	10-24 X 1-1/4 SHCS	SOCKET HEAD CAP SCREW	4	
11	WH1023	CAP, OPEN-CENTER MANIFOLD SECTION	1	
12	PMB02P2	RELIEF VALVE W/ SPECIAL ADJUSTMENT	1	
13	PMP02W05	CHECK VALVE	1	
14	O-03750500	O-RING	36	
15	Y-6408-HHP-O-8	PLUG	7	
16	4000-908	SEAL, O-RING BOSS	19	
17	Y-6408-HHP-O-4	PLUG	2	
18	Y-6408-HHP-O-6	PLUG	1	
19	4000-906	SEAL, O-RING BOSS	1	
20	Y-6901-F-NWO-10-8	ADAPTER, 90°, 7/8" M O-RING - 1/2" FPT SWIVEL	1	
21	4000-904	SEAL, O-RING BOSS	3	
22	Y-6900-O-10-8	ADAPTER, 7/8" M O-RING - 1/2" FPT SWIVEL	1	
23	Y-6901-F-NWO-4-4	ADAPTER, 90°, 7/16" M O-RING - 1/4" FPT SWIVEL	1	
24	Y-6900-O-8-8	ADAPTER, 3/4" M O-RING - 1/2" FPT SWIVEL	6	
25	3/8-16 X 1-1/4 UNC	HEX BOLT, GRADE 5	2	
26	3/8 LW	SPRING LOCK WASHER	2	
27	Y-6900-O-8-6	ADAPTER, 3/4" M O-RING - 3/8" FPT SWIVEL	6	



REAR VIEW OF MANIFOLD BLOCK

KBW044 HYDRAULIC CONTROL MANIFOLD - FITTINGS

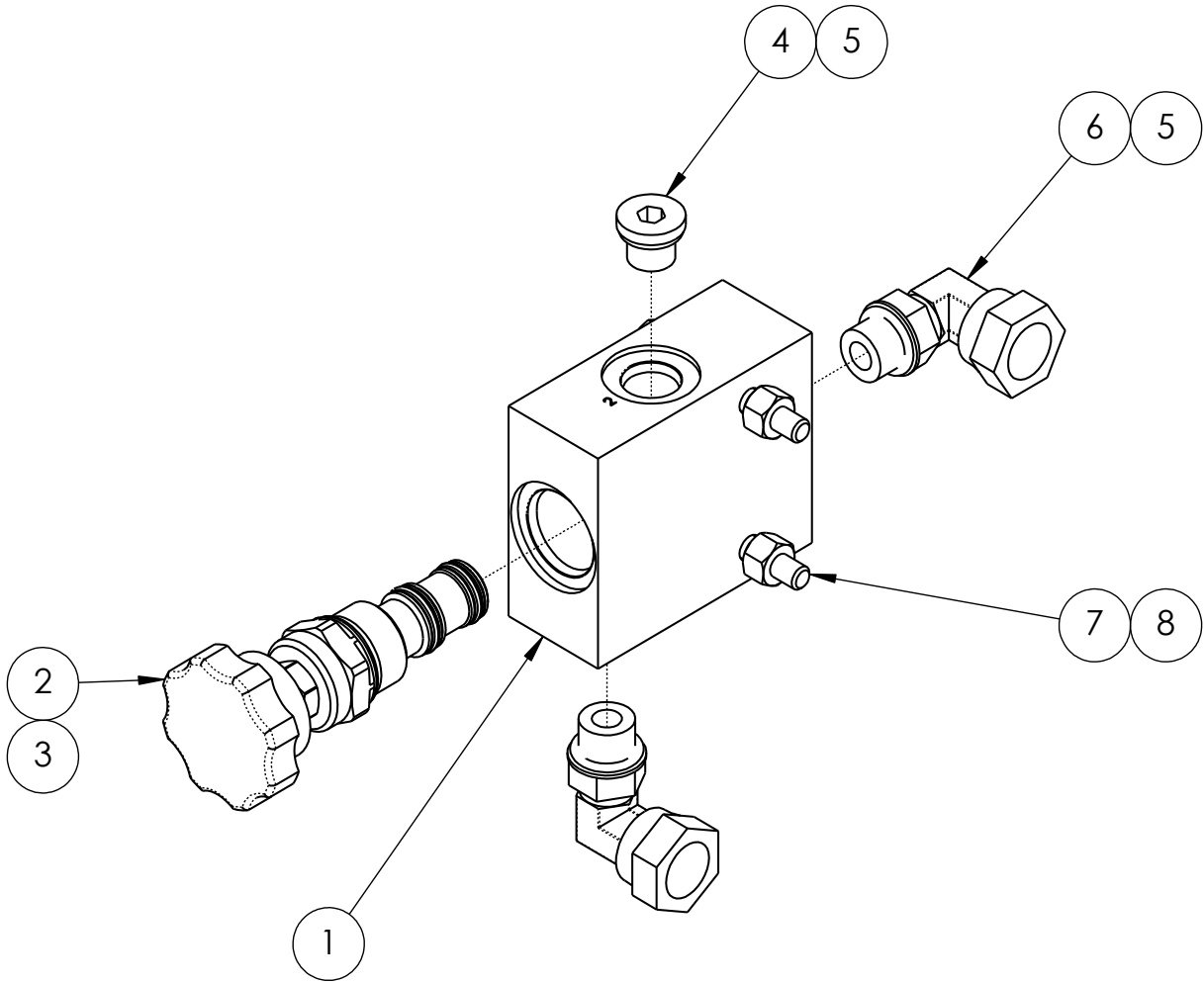
ITEM #	PART NUMBER	DESCRIPTION	QTY.	SERIAL #
1	FR10-3xF	FLOW CONTROL VALVE	1	
2	4000-910	SEAL, O-RING BOSS	4	
3	RV10-2xA	RELIEF VALVE	1	
4	WH1025	HYDRAULIC MANIFOLD	1	
5	HD-3C3-G02-LW-F-12VDC	D03 SOLENOID VALVE	2	
6	HD-2B3B-G02-LW-F-12VDC	D03 SOLENOID VALVE	1	
7	10-24 X 1-3/4 SHCS	SOCKET HEAD CAP SCREW	16	
8	10-24 X 3-1/2 SHCS	SOCKET HEAD CAP SCREW	8	
9	HD-3C6-G02-LW-F-12VDC	D03 SOLENOID VALVE	3	
10	10-24 X 1-1/4 SHCS	SOCKET HEAD CAP SCREW	4	
11	WH1023	CAP, OPEN-CENTER MANIFOLD SECTION	1	
12	PMB02P2	RELIEF VALVE W/ SPECIAL ADJUSTMENT	1	
13	PMP02W05	CHECK VALVE	1	
14	O-03750500	O-RING	36	
15	Y-6408-HHP-O-8	PLUG	7	
16	4000-908	SEAL, O-RING BOSS	19	
17	Y-6408-HHP-O-4	PLUG	2	
18	Y-6408-HHP-O-6	PLUG	1	
19	4000-906	SEAL, O-RING BOSS	1	
20	Y-6901-F-NWO-10-8	ADAPTER, 90°, 7/8" M O-RING - 1/2" FPT SWIVEL	1	
21	4000-904	SEAL, O-RING BOSS	3	
22	Y-6900-O-10-8	ADAPTER, 7/8" M O-RING - 1/2" FPT SWIVEL	1	
23	Y-6901-F-NWO-4-4	ADAPTER, 90°, 7/16" M O-RING - 1/4" FPT SWIVEL	1	
24	Y-6900-O-8-8	ADAPTER, 3/4" M O-RING - 1/2" FPT SWIVEL	6	
25	3/8-16 X 1-1/4 UNC	HEX BOLT, GRADE 5	2	
26	3/8 LW	SPRING LOCK WASHER	2	
27	Y-6900-O-8-6	ADAPTER, 3/4" M O-RING - 3/8" FPT SWIVEL	6	



KBW048 CONTROL CONSOLE

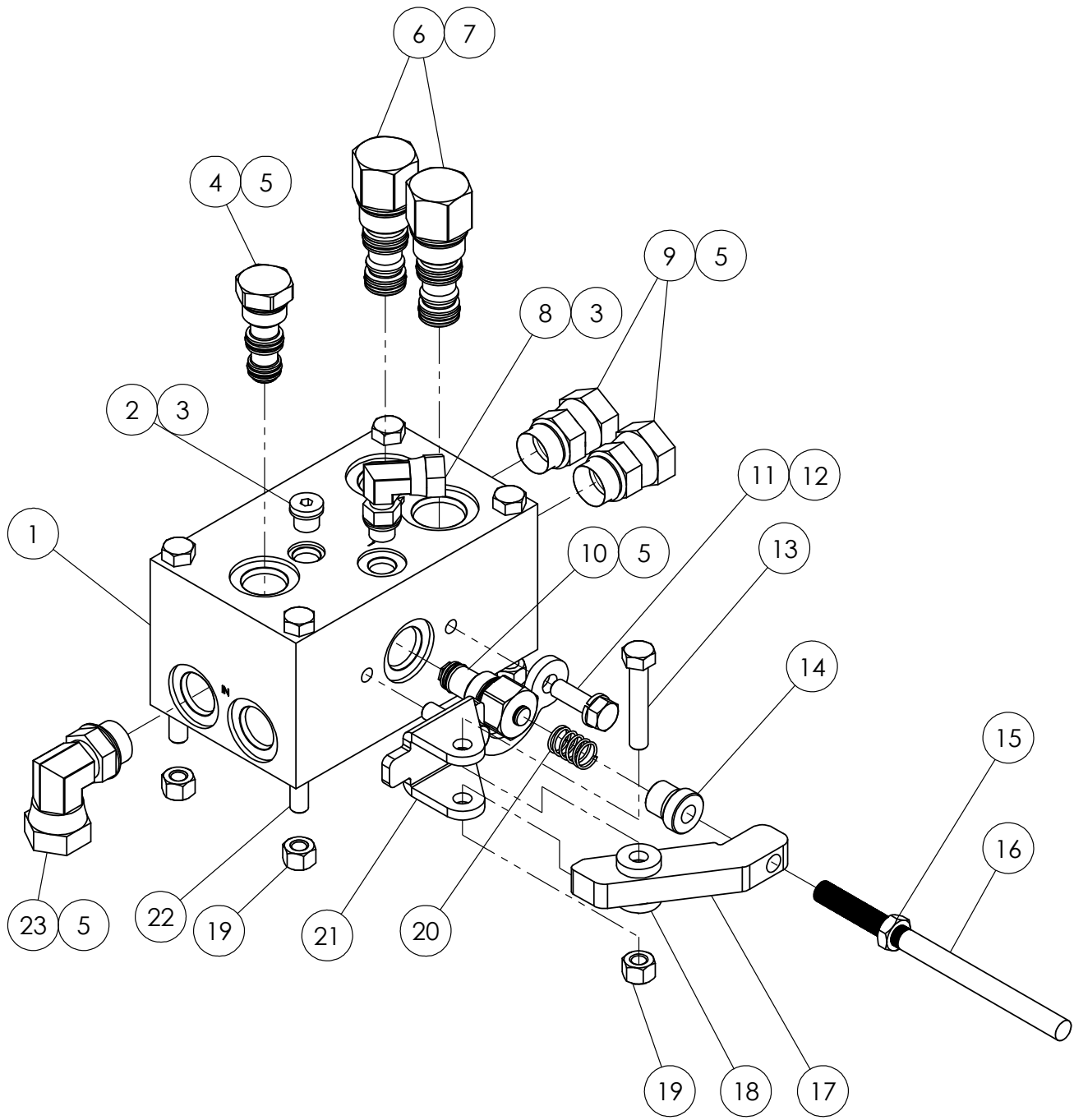


ITEM #	PART NUMBER	DESCRIPTION	QTY.	SERIAL #
1	KBW047	CONTROL BOX ASSEMBLY	1	
2	KBW1403	GAUGE BOX	1	
3	Y-1504-F-4-4	ADAPTER, 45°, 1/4" FPT - 1/4" FPT SWIVEL	1	
4	LFSB25-3000U	FILTER GAUGE	1	
5	KBW041	HOOP SPEED CONTROL - SEE PAGE #25	1	



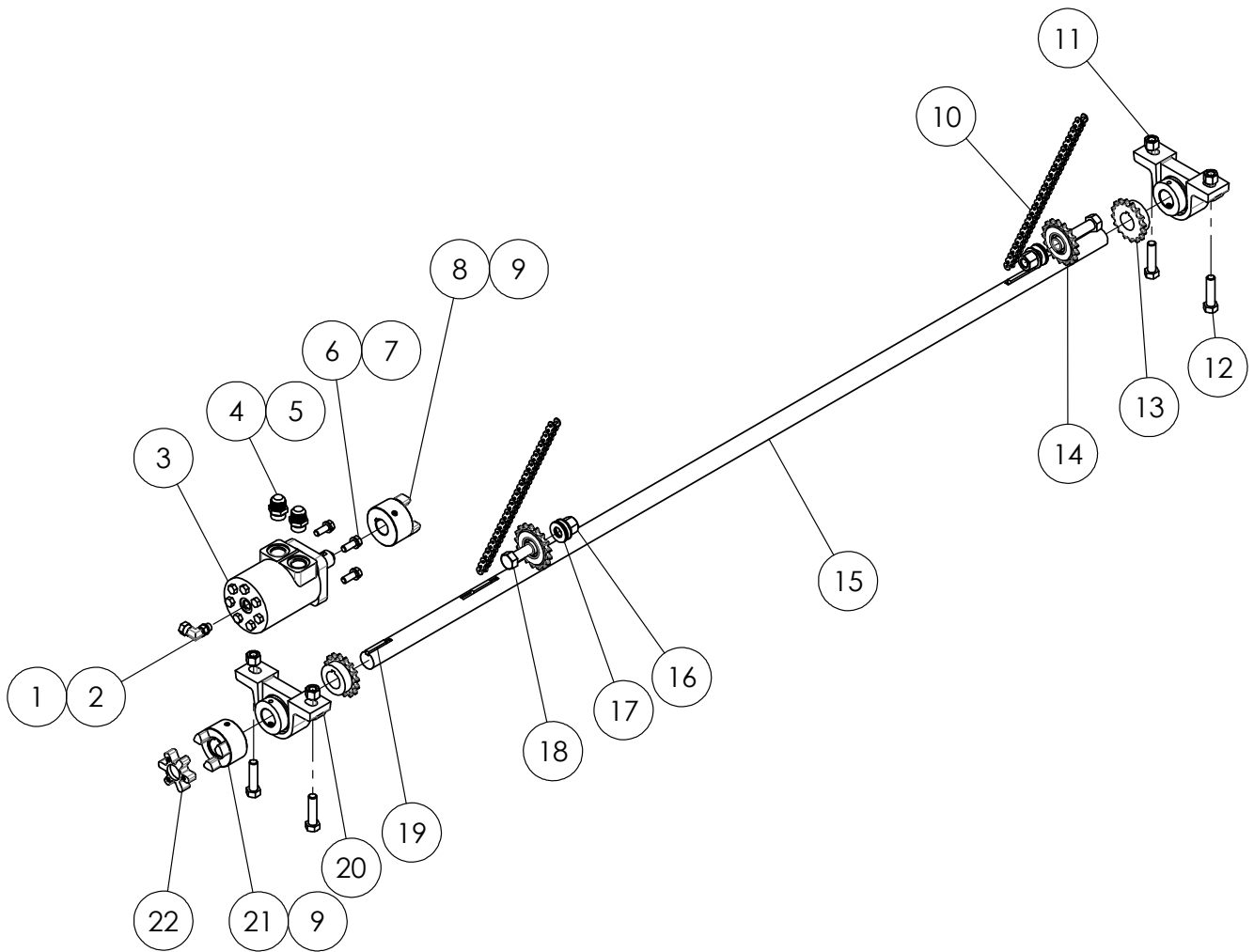
KBW041 HOOP SPEED CONTROL VALVE

ITEM #	PART NUMBER	DESCRIPTION	QTY.	SERIAL #
1	WH1026	VALVE BLOCK	1	
2	FR10-3xE	FLOW CONTROL VALVE, VARIABLE	1	
3	4000-910	SEAL, O-RING BOSS	1	
4	Y-6408-HHP-O-6	PLUG	1	
5	4000-906	SEAL, O-RING BOSS	3	
6	Y-6901-F-NW O-6-6	ADAPTER, 90°, 9/16" M O-RING - 3/8" FPT SWIV.	2	
7	1/4-20 X 2 UNC	HEX BOLT, GRADE 5	2	
8	1/4-20 LN	LOCK NUT, NYLON INSERT	2	



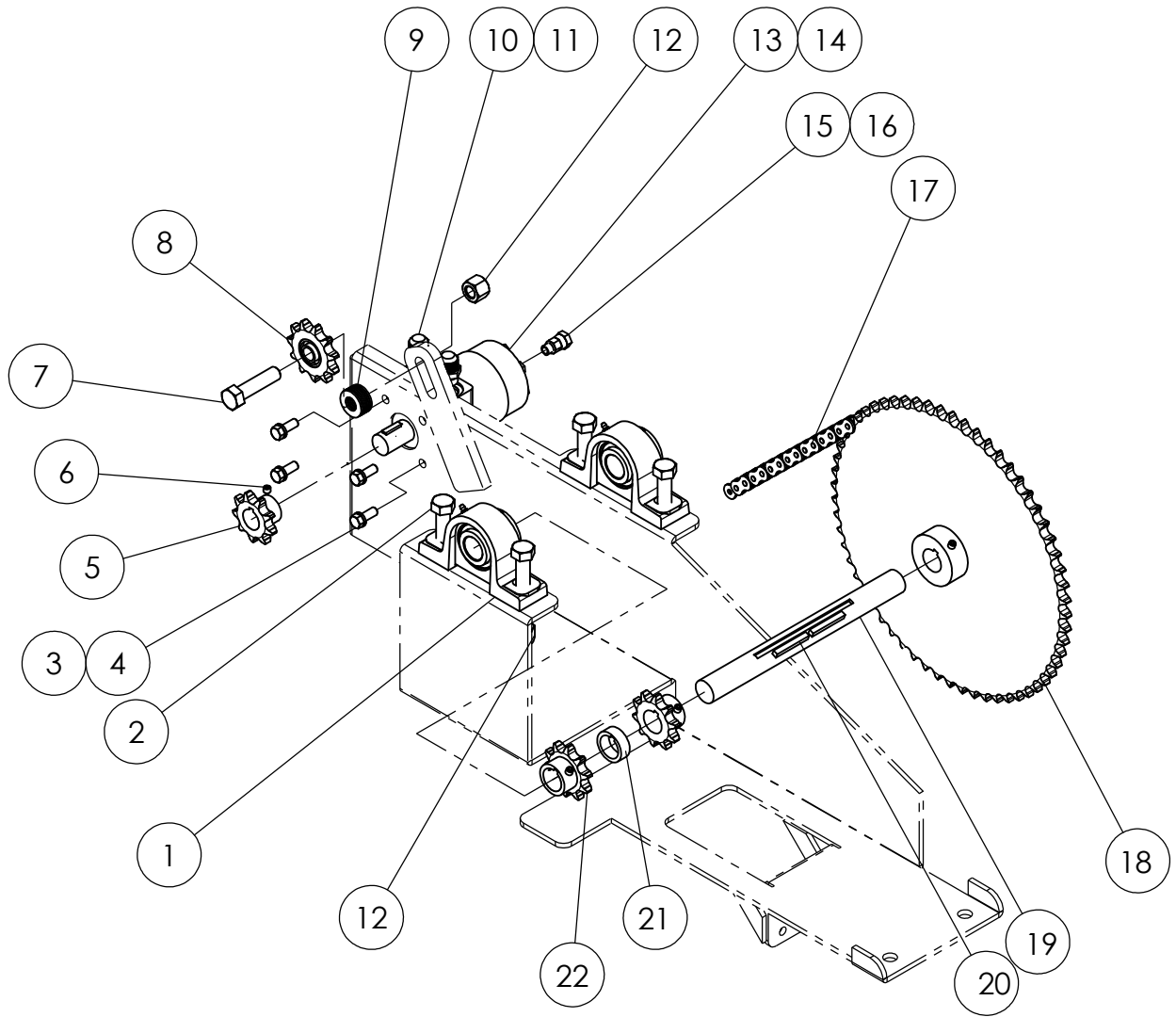
KBW064 DUAL DRIVE VALVE  
PRO-2 ONLY

ITEM #	PART NUMBER	DESCRIPTION	QTY.	SERIAL #
1	WH-1036	VALVE BLOCK	1	
2	Y-6408-HHP-O-4	PLUG	1	
3	4000-904	SEAL, O-RING BOSS	2	
4	LS08-30	FLOW DIVIDER VALVE	1	
5	4000-908	SEAL, O-RING BOSS	5	
6	EP10-S38	DUMP VALVE	2	
7	4000-910	SEAL, O-RING BOSS	2	
8	Y-6901-F-NWO-4-4	ADAPTER, 90°, 7/16" M O-RING - 1/4" FPT SWIVEL	1	
9	Y-6900-O-8-8	ADAPTER, 3/4" M O-RING - 1/2" FPT SWIVEL	2	
10	MV08-22	POPPET VALVE	1	
11	5/16-18 X 1 UNC	HEX BOLT, GRADE 5	2	
12	5/16 LW	SPRING LOCK WASHER	2	
13	5/16-18 X 1-3/4 UNC	HEX BOLT, GRADE 5	1	
14	KBW 1287	PRO-2 VALVE BUTTON	1	
15	3/8-24 JAM	HEX JAM NUT, GRADE 5	1	
16	KBW 1308	DRIVE BLOCK ROD	1	
17	KBW 1132R2	VALVE ENGAGE ARM	1	
18	KBW 1134	SPACER	2	
19	5/16-18 LN	LOCK NUT, NYLON INSERT	5	
20	91	COMPRESSION SPRING	1	
21	KBW 1131R2	PRO-2 BRACKET	1	
22	5/16-18 X 3-3/4 UNC	HEX BOLT, GRADE 5	4	
23	Y-6901-F-NWO-8-8	ADAPTER, 90°, 3/4" M O-RING - 1/2" FPT SWIVEL	1	



KBW1167 DRIVE HOOP DRIVE ASSEMBLY

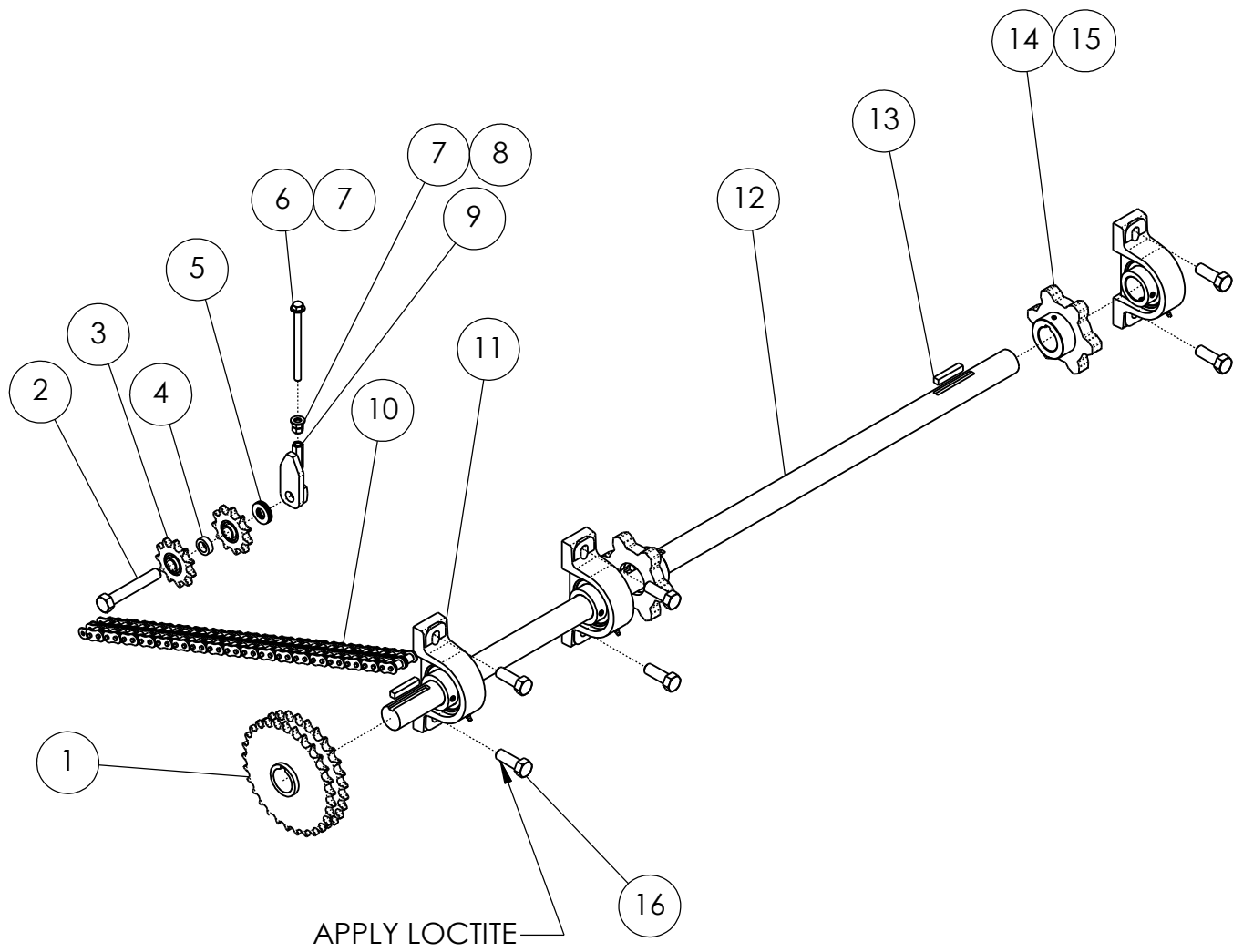
ITEM #	PART NUMBER	DESCRIPTION	QTY.	SERIAL #
1	Y-6901-F-NW O-4-4	ADAPTER, 90°, 7/16" M O-RING - 1/4" FPT SWIVEL	1	
2	4000-904	SEAL, O-RING BOSS	1	
3	YMPH50-H4-K-S-B	HYDRAULIC MOTOR, 3.15 CI, 9HP	1	
4	Y-6400-O-8-10	ADAPTER, STRAIGHT, 3/4" 37° JIC - 7/8" M O-RING	2	
5	4000-910	SEAL, O-RING BOSS	2	
6	3/8-16 X 1 UNC	HEX BOLT, GRADE 5	4	
7	3/8 LW	SPRING LOCK WASHER	4	
8	L100-N-1KW	COUPLING HUB, 1" ID	1	
9	5/16-18 X 3/8 SS	SET SCREW	4	
10	#40 ROLLER -1	40 ROLLER CHAIN, 93 LINKS	2	
11	1/2-13 LN	LOCK NUT, NYLON INSERT	4	
12	1/2-13 X 2 UNC	HEX BOLT, GRADE 5	4	
13	40BS16 X 1-1/8	ROLLER CHAIN SPROCKET W/HUB	2	
14	4017E10	IDLER SPROCKET	2	
15	KBW1167	SHAFT, HOOP DRIVE	1	
16	5/8-11 LN	LOCK NUT, NYLON INSERT	2	
17	5/8 FW	FLAT WASHER	6	
18	5/8-11 X 2-1/2 UNC	HEX BOLT, GRADE 5	2	
19	K 1/4 X 1-1/2	SQUARE KEY	3	
20	NAP 206-18	1-1/8" ID PILLOW BLOCK BEARING	2	
21	L100-N-9_8KW	COUPLING HUB, 1-1/8" ID	1	
22	L100N	COUPLING SPIDER	1	



KBW039 WEB DRIVE JACKSHAFT



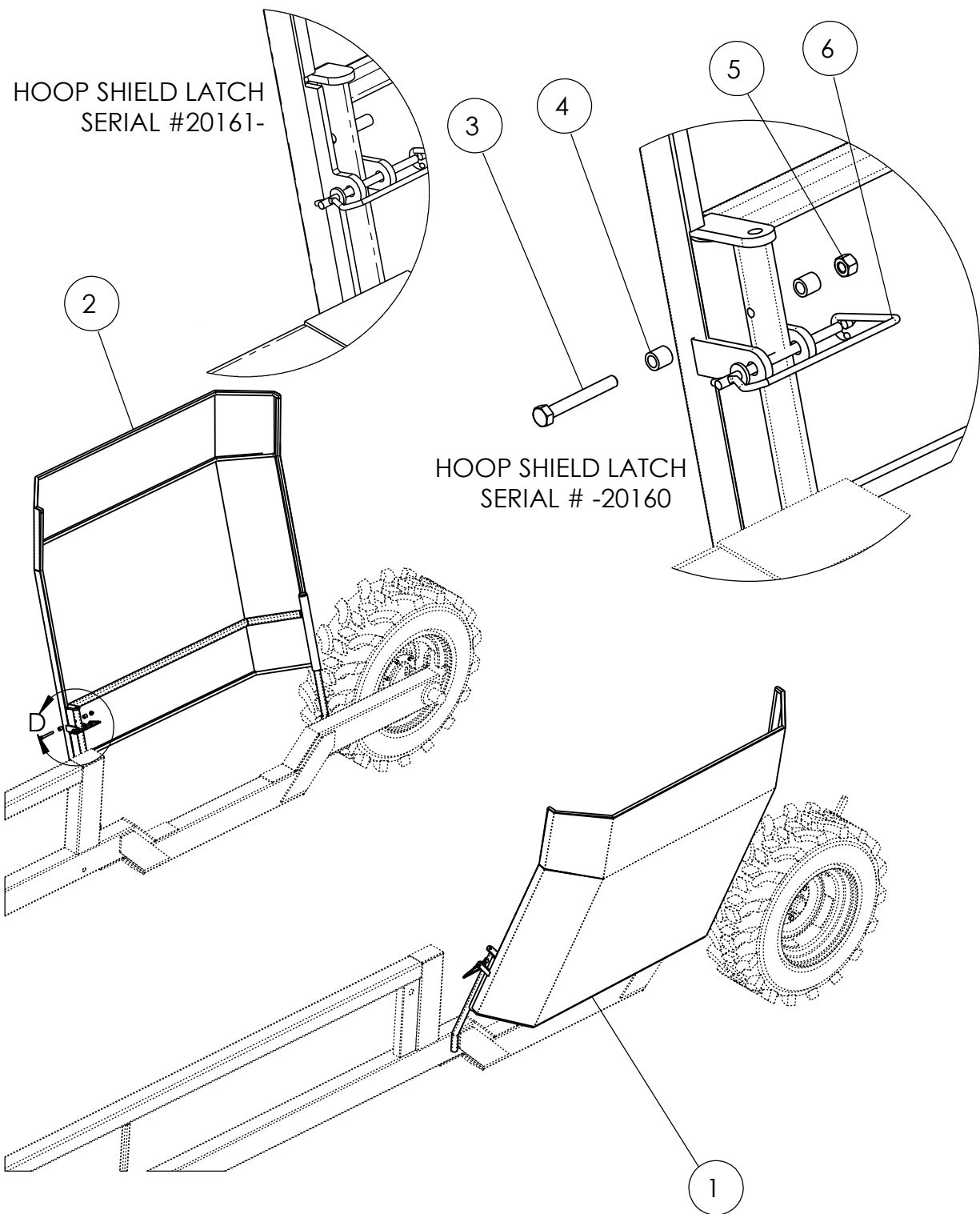
ITEM #	PART NUMBER	DESCRIPTION	QTY.	SERIAL #
1	NAP 206-18	1-1/8" ID PILLOW BLOCK BEARING	2	
2	5/8-11 X 2 UNC	HEX BOLT, GRADE 5	4	
3	3/8 LW	SPRING LOCK WASHER	4	
4	3/8-16 X 1 UNC	HEX BOLT, GRADE 5	4	
5	60B9 X 1	ROLLER CHAIN SPROCKET W/HUB	1	
6	5/16-18 X 5/16 SHSS	SOCKET HEAD SET SCREW, CUP POINT	8	
7	5/8-11 X 2-1/2 UNC	HEX BOLT, GRADE 5	1	
8	6011E10	IDLER, #60 CHAIN, 5/8" ID, 11 TOOTH	1	
9	5/8 FW	FLAT WASHER	7	
10	Y-6400-O-8-10	ADAPTER, STRAIGHT, 3/4" 37° JIC - 7/8" M O-RING	2	
11	4000-910	SEAL, O-RING BOSS	2	
12	5/8-11 LN	LOCK NUT, NYLON INSERT	5	
13	YMPH160-H4-K-S-B	HYDRAULIC MOTOR, 9.49 CI, 12 HP	1	
14	1/4 X 1 WK	WOODRUFF KEY, FULL RADIUS	1	
15	Y-6900-O-4-4	ADAPTER, 7/16" M O-RING - 1/4" FPT SWIVEL	1	
16	4000-904	SEAL, O-RING BOSS	1	
17	#60 ROLLER -1	#60 ROLLER CHAIN, 73 LINKS	1	
18	60B60 X 1-1/8	ROLLER CHAIN SPROCKET W/HUB	1	
19	KBW1168	JACK SHAFT	1	
20	K 1/4 X 2	SQUARE KEY	2	
21	KBW1112	SPROCKET SPACER	1	
22	60BS10 X 1-1/8	ROLLER CHAIN SPROCKET W/HUB	2	



KBW1166 DRIVE WEB DRIVE ASSEMBLY

ITEM #	PART NUMBER	DESCRIPTION	QTY.	SERIAL #
1	KBW1192	WEB DRIVE DOUBLE GEAR	1	
2	5/8-11 X 4 UNC	HEX BOLT, GRADE 5	1	
3	6011E10	IDLER, #40 CHAIN, 5/8" ID, 11 TOOTH	2	
4	KBW1108	BUSHING, WEB IDLER	1	
5	5/8 FW	FLAT WASHER	3	
6	3/8-16 X 5 UNC	HEX BOLT, GRADE 5	1	
7	3/8 FW	FLAT WASHER	2	
8	3/8-16 UNC	HEX NUT, GRADE 5	2	
9	KBW1258	WEB DRIVE TENSIONER	1	
10	#60-2	#60 3/4"P DOUBLE ROLLER CHAIN	1	
11	NAP 208-24	1-1/2" ID PILLOW BLOCK BEARING	3	
12	KBW1166	SHAFT, WEB DRIVE	1	
13	K 3/8 X 2	SQUARE KEY	3	
14	KBW1030	SPROCKET, WEB	2	
15	1/4-20 X 5/8 SHSS	SOCKET HEAD SET SCREW, CUP POINT	2	
16	5/8-11 X 1-3/4 UNC	HEX BOLT, GRADE 5	6	
17	LOCTITE 242	MEDIUM-STRENGTH THREADLOCKER	1	

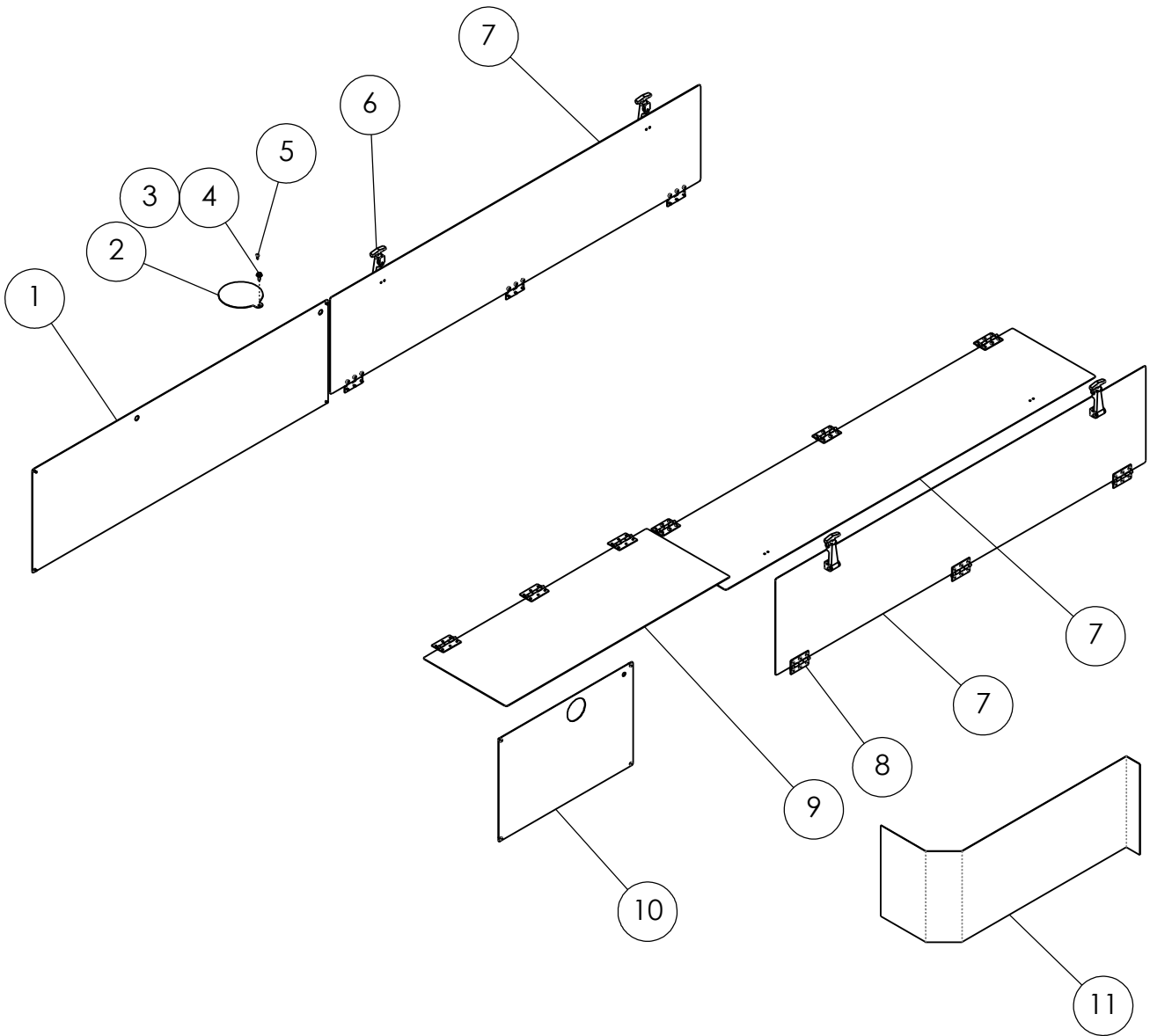
HOOP SHIELD LATCH  
SERIAL #20161-



HOOP SHIELD LATCH  
SERIAL # -20160

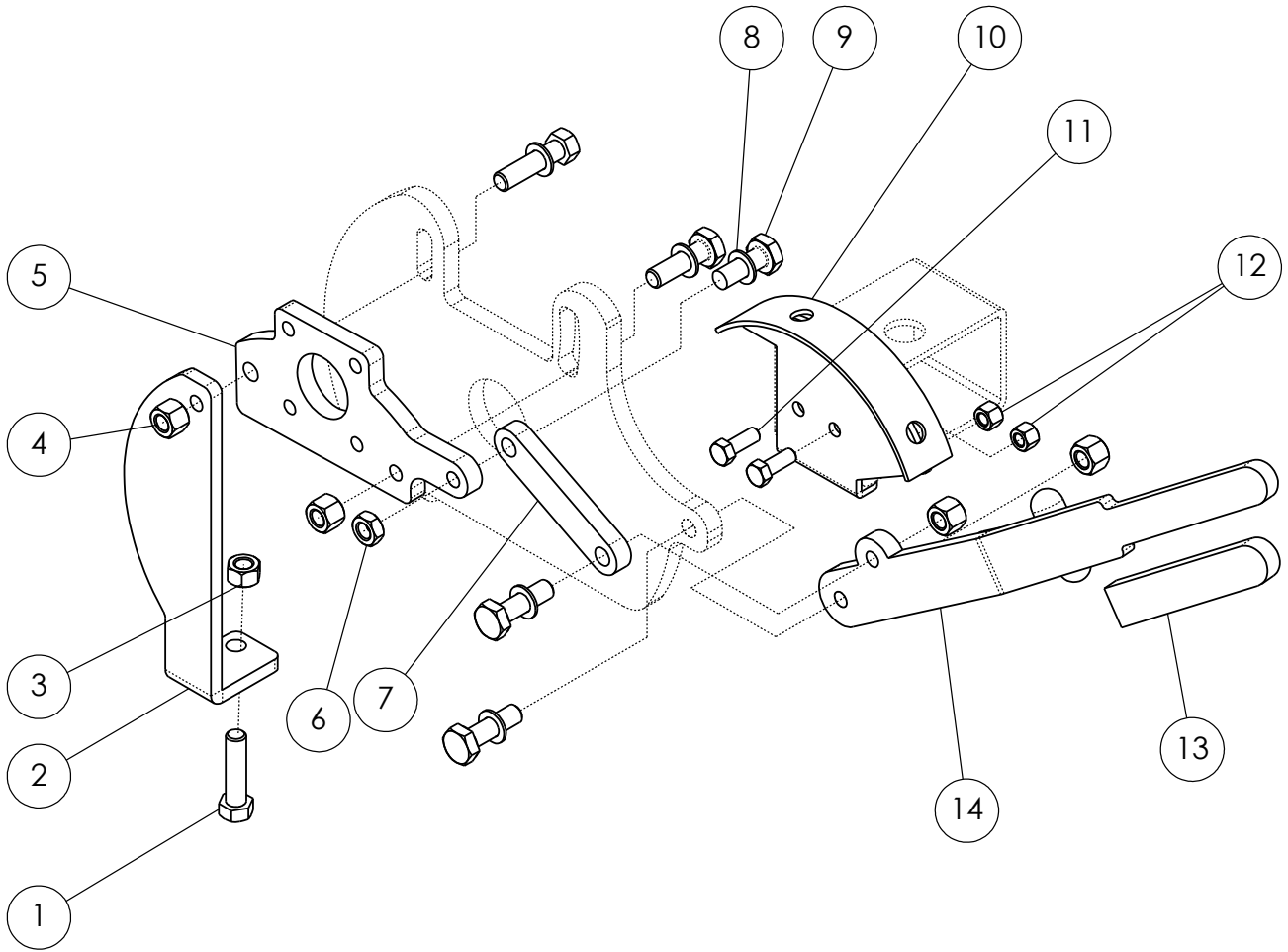
MODEL #252 BALE WRAPPER  
HOOP SHIELDS

ITEM #	PART NUMBER	DESCRIPTION	QTY.	SERIAL #
1	KBW018-RH	SHIELD, RH HOOP	1	
2	KBW018-LH	SHIELD, LH HOOP	1	
3	5/16-18 X 2-1/2 UNC	HEX BOLT, GRADE 5	2	-20160
		NO LONGER REQUIRED		20161-
4	KBW1104	HOOP SHIELD BUSHING	4	-20160
		NO LONGER REQUIRED		20161-
5	5/16-18 LN	LOCK NUT, NYLON INSERT	2	-20160
		NO LONGER REQUIRED		20161-
6	FLPSW5	SAFETY PIN	2	
7	CS-4712ST-100	BUMPER (NOT SHOWN)	2	



KBW046 ENGINE COMPARTMENT COVERS

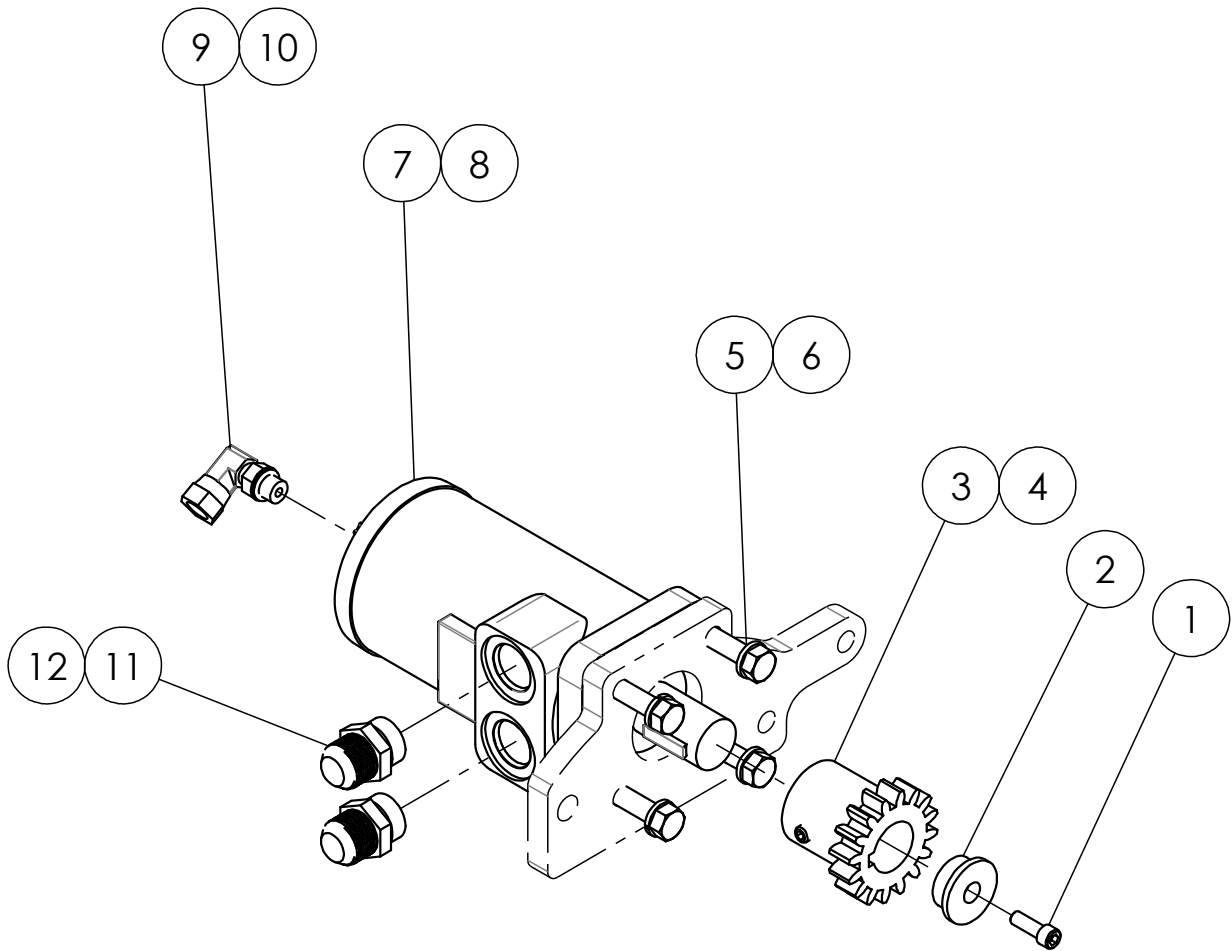
ITEM #	PART NUMBER	DESCRIPTION	QTY.	SERIAL #
1	KBW 1078	PANEL, TANK SIDE COVER	1	
2	KBW 1008	COVER, HYDRAULIC & FUEL FILL	2	20103-20114
	KBW 1008	COVER, HYDRAULIC FILL	1	20115-
3	1/4-20 LN	LOCK NUT, NYLON INSERT	2	20103-20114
			1	20115-
4	1/4-20 X 3/4 UNC	HEX BOLT, GRADE 5	2	20103-20114
			1	20115-
5	10-24 X 1/2	PAN HEAD SCREW	2	20103-20114
			1	20115-
6	32818528	RUBBER HOOD LATCH	4	
7	KBW 1079	PANEL, LARGE DOOR	3	
8	HINGE	LEAF HINGE	12	
9	KBW 1080R0	PANEL, SMALL DOOR, 24"	1	-20102
	KBW 1080R2	PANEL, SMALL DOOR W / FILL COVER		20103-20114
	KBW 1080	PANEL, SMALL DOOR (ENGINE)		20115-
10	KBW 1081R3	PANEL, SMALL SIDE (TRANSMITTER)	1	-20114
	KBW 1081	PANEL, SMALL SIDE (TRANSMITTER) W / FUEL FILL		20115-
11	KBW 1341	SCREEN, CHAIN SHIELD	1	
12	10-24 X 3/8	PAN HEAD SCREW (Not Shown)	80	
13	1024 KEPS	10-24 KEPS NUT (Not Shown)	36	



KBW022 DRIVE LINKAGE



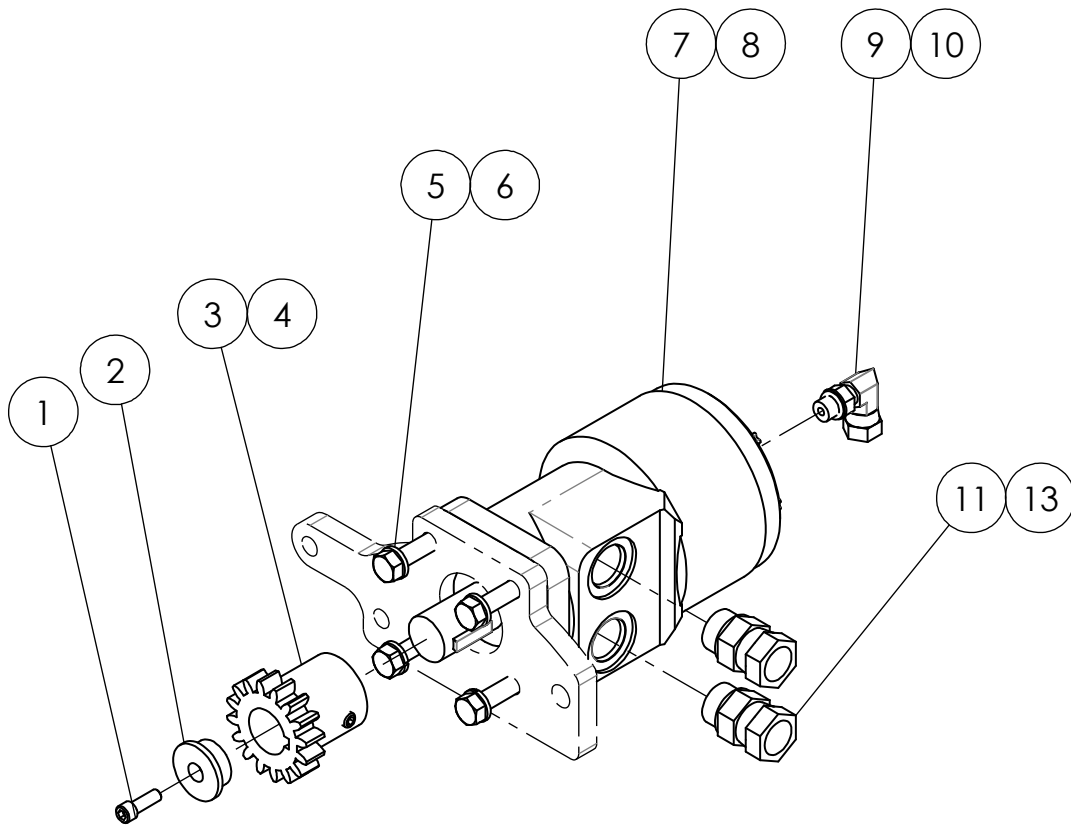
ITEM #	PART NUMBER	DESCRIPTION	QTY.	SERIAL #
1	1/2-13 X 2 UNC	HEX BOLT, GRADE 5	2	
2	KBW 1071-LH	PLATE, DRIVE SPRING, PRO & PRO-2	1	
	KBW 1071-RH	PLATE, DRIVE SPRING, PRO-2 DUAL DRIVE		
3	1/2-13 UNC	HEX NUT, GRADE 5	1	
4	1/2-13 LN	NYLON LOCK NUT	4	
5	KBW 1070	MOUNT, DRIVE MOTOR	1	
6	1/2-13 JAM	HEX JAM NUT, GRADE 5	1	
7	KBW 1084	LINK, DRIVE	1	
8	FMBN408	MACHINE WASHER	5	
9	FSBA3250814	HEX STRUCTURAL BOLT, 1" THREADED	4	
10	KBW024-LH	DRIVE ENGAGE LOCK, PRO & PRO-2	1	
	KBW024-RH	DRIVE ENGAGE LOCK, PRO-2 DUAL DRIVE		
11	3/8-16 X 1 UNC	HEX BOLT, GRADE 5	2	
12	3/8-16 LN	NYLON LOCK NUT	2	
13	1/4" X 1-1/4"	HANDLE COVER	1	
14	KBW 1083 HANDLE, LH	DRIVE HANDLE, PRO & PRO-2	1	
	KBW 1083 HANDLE, RH	DRIVE HANDLE, PRO-2 DUAL DRIVE		



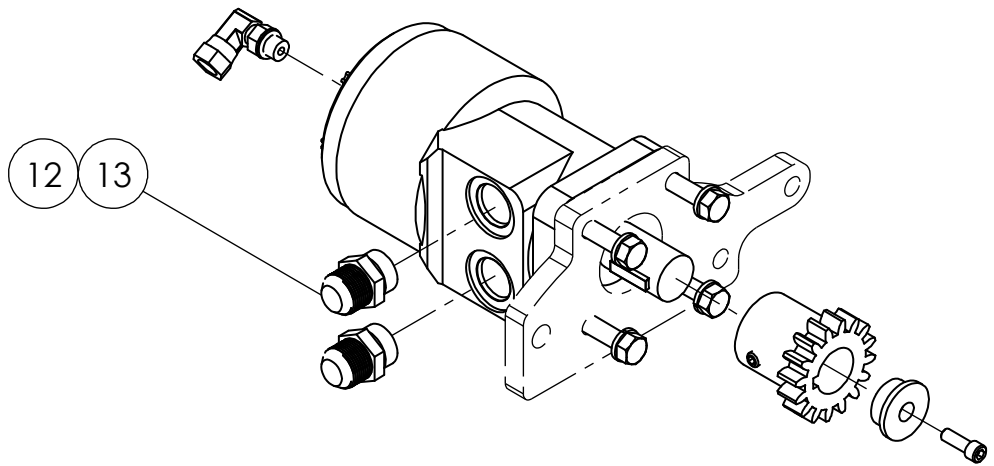
KBW042 LH DRIVE MOTOR ASSEMBLY

## PRO SINGLE WHEEL DRIVE MOTOR

ITEM #	PART NUMBER	DESCRIPTION	QTY.	SERIAL #
1	1/4-20 X 3/4 SH	SOCKET HEAD CAP SCREW	1	
2	KBW1107	RETAINER, GEAR	1	
3	8FS16	SPUR GEAR	1	
4	5/16-18 X 5/16 SHSS	SOCKET HEAD SET SCREW, CUP POINT	1	
5	3/8 LW	SPRING LOCK WASHER	4	
6	3/8-16 X 1-1/4 UNC	HEX BOLT, GRADE 5	4	
7	101-2435-009	HYDRAULIC MOTOR, 294 cc	1	
8	1/4 X 1 WK	WOODRUFF KEY, FULL RADIUS	1	
9	Y-6901-F-NWO-4-4	ADAPTER, 90°, 7/16" M O-RING - 1/4" FPT SWIVEL	1	
10	4000-904	SEAL, O-RING BOSS	1	
11	Y-6400-O-8-10	ADAPTER, STRAIGHT, 3/4" 37° JIC - 7/8" M O-RING	2	
12	4000-910	SEAL, O-RING BOSS	2	



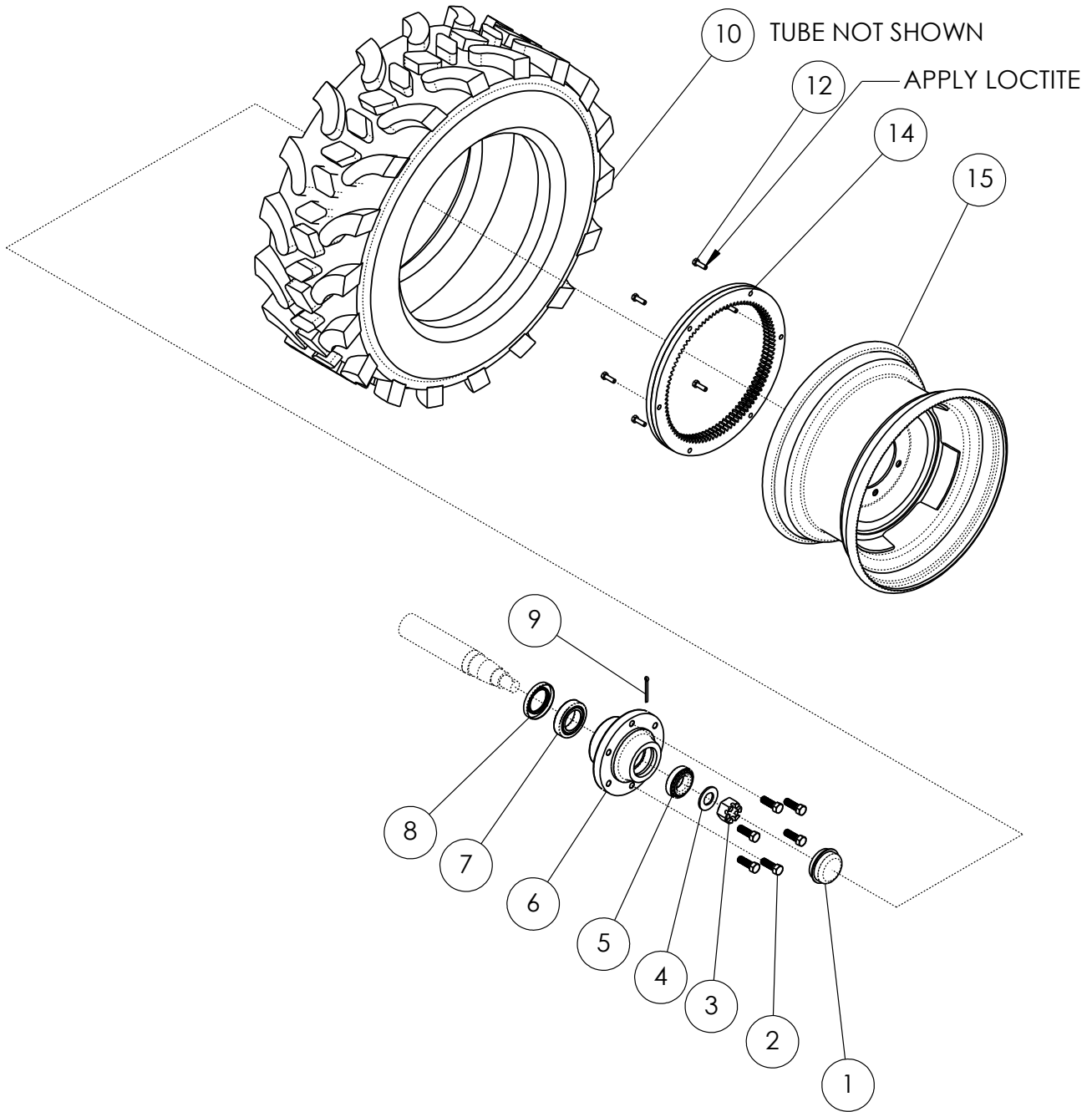
KBW061 RH DRIVE MOTOR ASSEMBLY



KBW042 LH DRIVE MOTOR ASSEMBLY

PRO-2 DOUBLE WHEEL DRIVE MOTORS

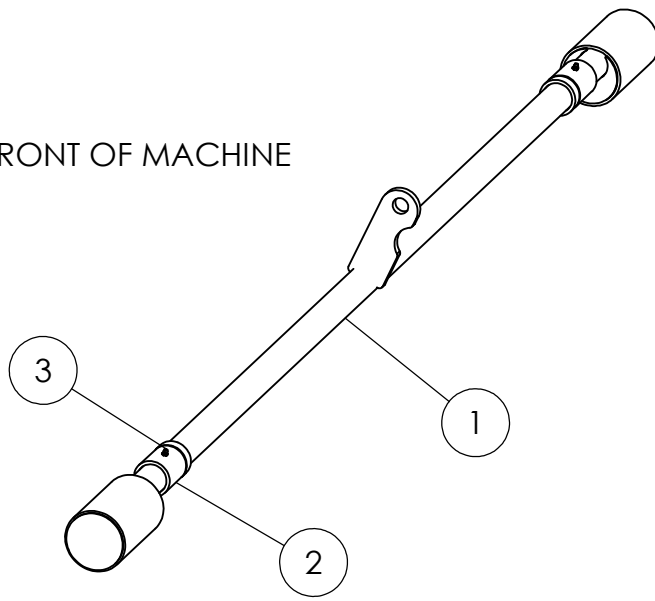
ITEM #	PART NUMBER	DESCRIPTION	QTY. EACH
1	1/4-20 X 3/4 SH	SOCKET HEAD CAP SCREW	1
2	KBW1107	RETAINER, GEAR	1
3	8FS16	SPUR GEAR	1
4	5/16-18 X 5/16 SHSS	SOCKET HEAD SET SCREW , CUP POINT	1
5	3/8 LW	SPRING LOCK WASHER	4
6	3/8-16 X 1-1/4 UNC	HEX BOLT, GRADE 5	4
7	103-2014-012	HYDRAULIC MOTOR, 243 cc	1
8	1/4 X 1 WK	WOODRUFF KEY, FULL RADIUS	1
9	Y-6901-F-NWO-4-4	ADAPTER, 90°, 7/16" M O-RING - 1/4" FPT SWIVEL	1
10	4000-904	SEAL, O-RING BOSS	1
11	Y-6900-O-10-8	ADAPTER, 7/8" M O-RING - 1/2" FPT SWIVEL RH MOTOR ONLY	2
12	Y-6400-O-8-10	ADAPTER, 3/4" 37° JIC - 7/8" M O-RING LH MOTOR ONLY	2
13	4000-910	SEAL, O-RING BOSS	2



KBW013-LH DRIVE WHEEL ASSEMBLY

ITEM #	PART NUMBER	DESCRIPTION	QTY.	SERIAL #
1	CAP 2.6	GREASE CAP, 2.56" OD	1	
2	LB 0.5-20	1/2-20 X 1-1/4 LUG BOLT	6	
3	1-12 SLOT	HEX SLOTTED NUT	1	
4	1 FW	FLAT WASHER, 1.062 X 2 X 0.134	1	
5	LM48548-LM48510	TAPERED ROLLER BEARING SET, 1.375 ID X 2.563 OD	1	
6	EM5000-6	6 BOLT HUB	1	
7	LM603049-LM603011	TAPERED ROLLER BEARING SET, 1.781 ID X 3.063 OD	1	
8	203063	GREASE SEAL, 2" ID X 3.066 OD	1	
9	CP-188X2000	3/16 X 2 COTTER PIN	1	
10	10X111461	10-16.5 EXTRA WALL SKIDSTEER TIRE	1	
11	TU552399	16.5" TUBE	1	
12	5/16-18 X 1 UNC	HEX BOLT, GRADE 5	6	
13	LOCTITE 242	MEDIUM-STRENGTH THREADLOCKER	1	
14	KBW 1075	DRIVE GEAR	2	
15	KBW 1077 DRIVE WHEEL	8.25 X 16.5 RIM AND GEAR PLATE WELDMENT	1	
16	CL0108-098	LUBRIPLATE 3000, HI-TACK MOLYBDENUM GREASE	1	

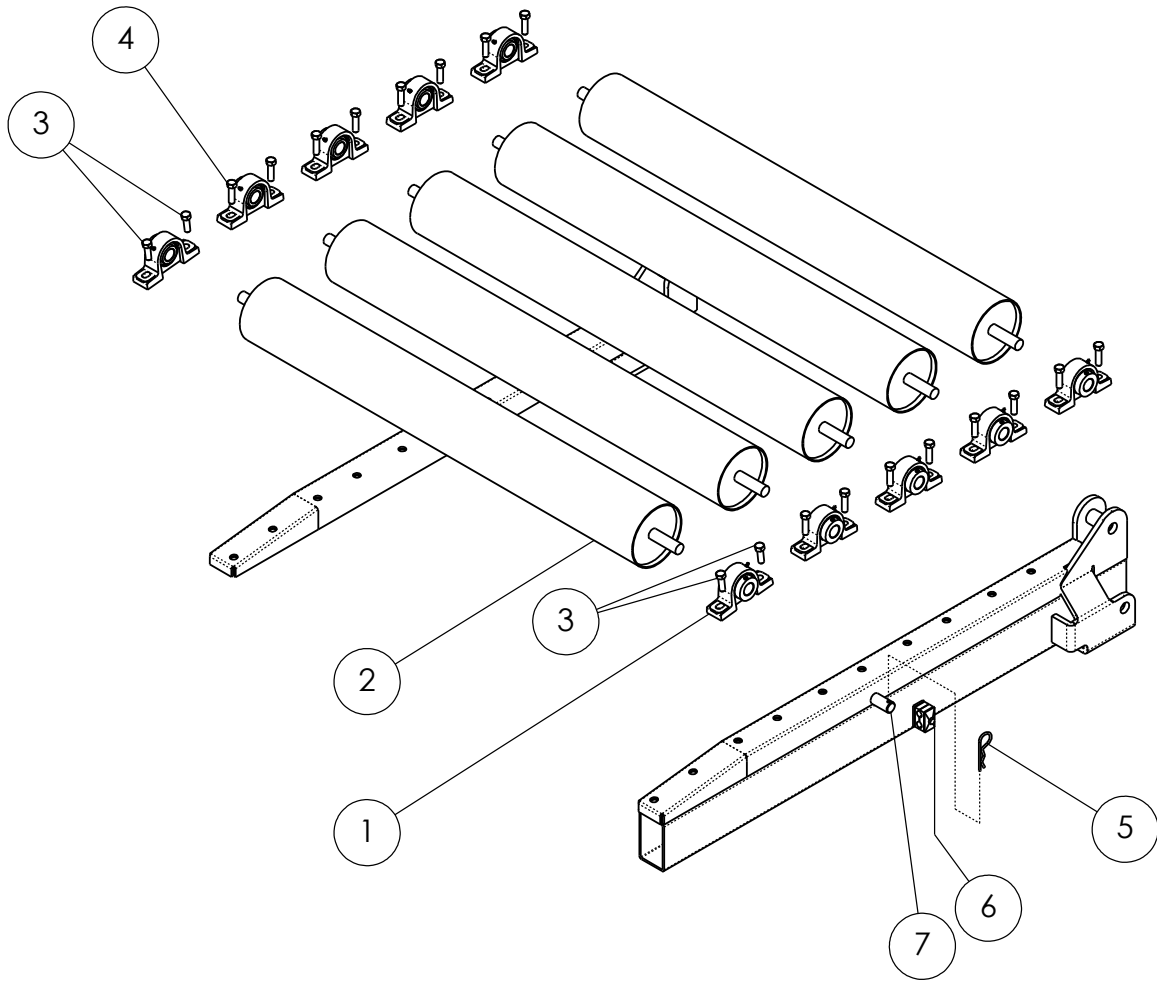
FRONT OF MACHINE



KBW06 BRAKE ASSEMBLY

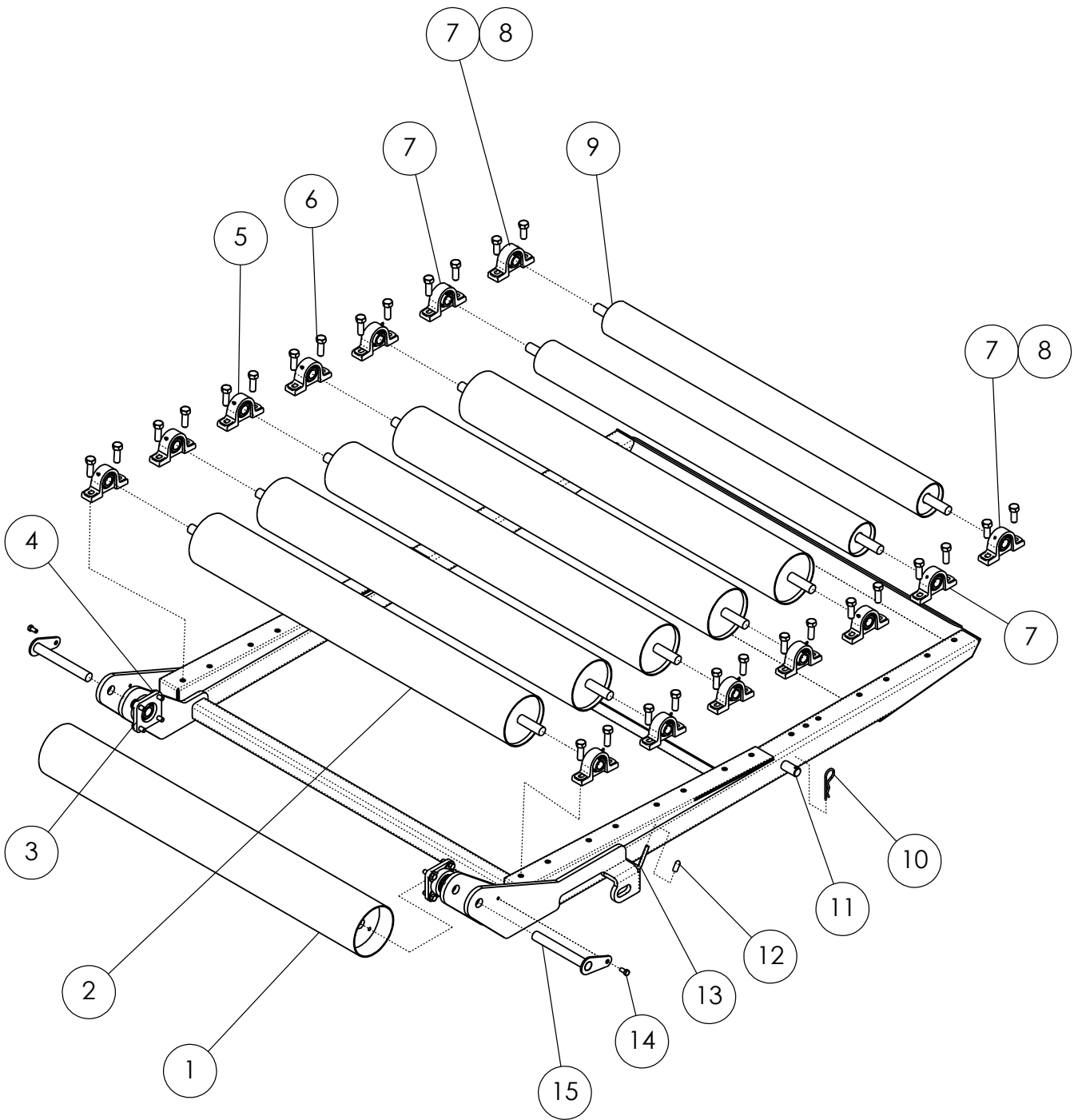


ITEM #	PART NUMBER	DESCRIPTION	QTY.	SERIAL #
1	KBW 1186	SHAFT, BRAKE CROSS	1	
2	KBW 1184	SLEEVE, BRAKE PIVOT	2	
3	ZERK	ZERK FITTING - STRAIGHT (1/4"-28 UNF)	2	



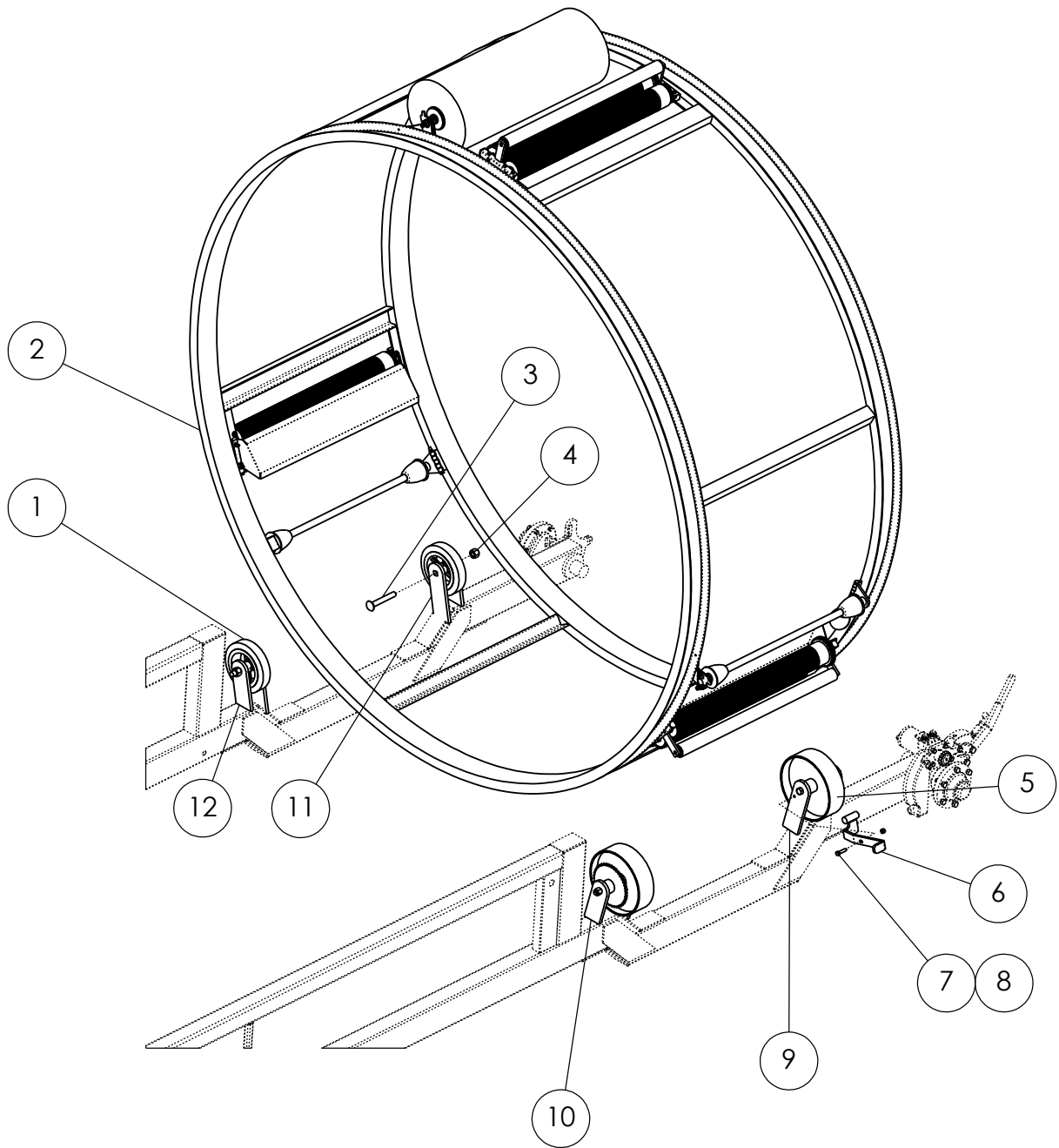
KBW 252 RAMP ROLLERS

ITEM #	PART NUMBER	DESCRIPTION	QTY.	SERIAL #
1	NAP 206-18	1-1/8" ID PILLOW BLOCK BEARING	8	EARLY
	NAP 206-18	1-1/8" ID PILLOW BLOCK BEARING	10	2013
	UCP 205-16	1" ID PILLOW BLOCK BEARING	10	MID 2014-
2	KBW012	8" ROLLER WELDMENT	4	EARLY
	KBW011	6" ROLLER WELDMENT WITH 1-1/8" SHAFT	5	2013
	KBW011	6" ROLLER WELDMENT	5	MID 2014-
3	1/2-13 X 1-1/2 UNC	HEX BOLT, GRADE 5	4	N/A EARLY
4	1/2-13 X 1-3/4 UNC	HEX BOLT, GRADE 5	16	
5	FBP6	SPRING CLIP	1	
6	T-2010S	HOSE CLAMP, DOUBLE 3/8"	2	
7	KBW1157	LATCH, GATE	1	



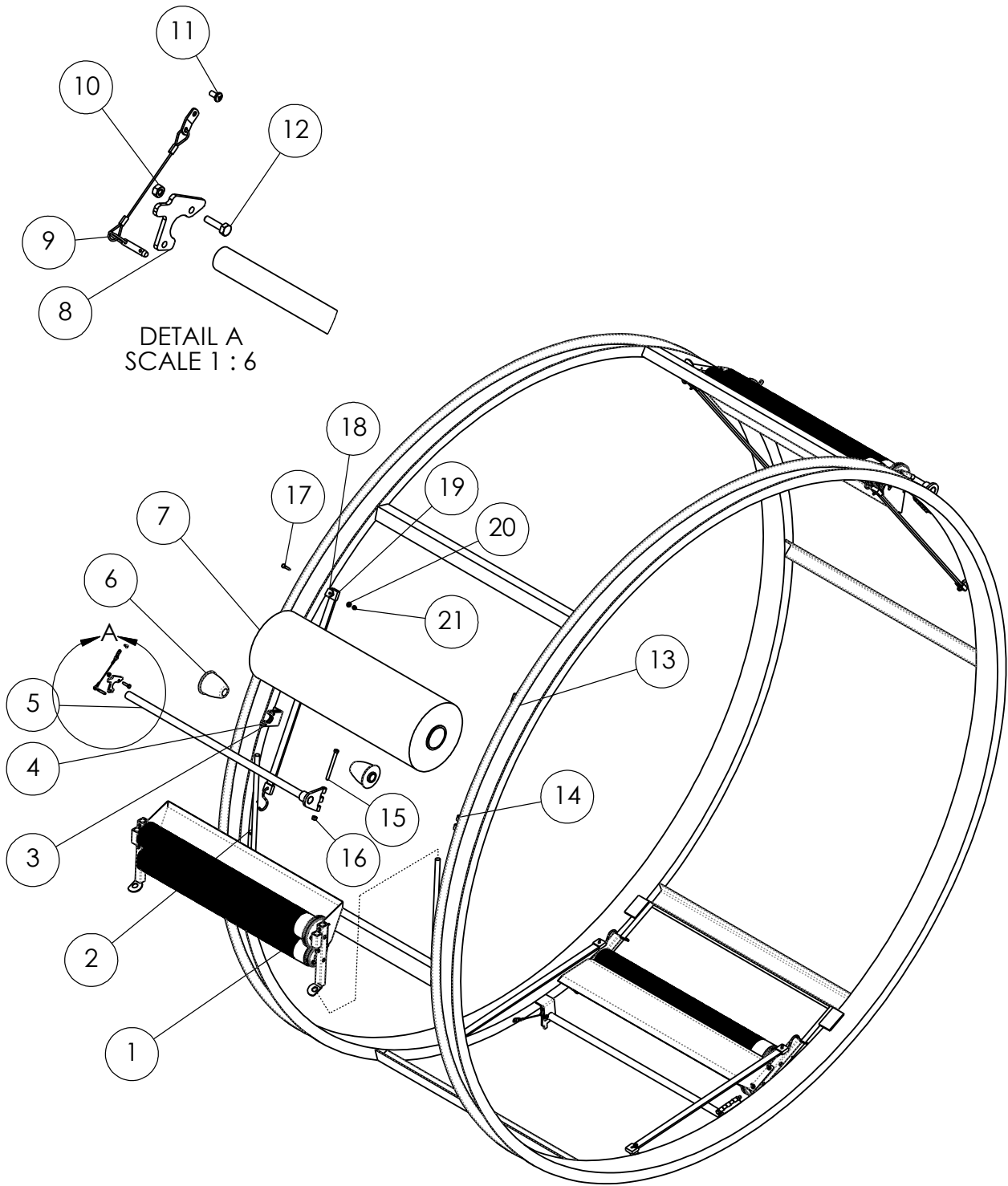
KBW04 TAILGATE COMPLETE

ITEM #	PART NUMBER	DESCRIPTION	QTY.	SERIAL #
1	KBW111	PIVOT ROLLER, 6"	1	
2	KBW011	6" ROLLER WELDMENT WITH 1-1/8" SHAFT	4	EARLY
	KBW011	6" ROLLER WELDMENT WITH 1-1/8" SHAFT	5	2013
	KBW011	6" ROLLER WELDMENT	5	MID 2014-
3	NANF 205-16	1" ID 4-BOLT FLANGE BEARING	2	
4	7/16-14 X 1-1/4 UNC	HEX BOLT, GRADE 5	8	
5	NAP206-18	1-1/8" ID PILLOW BLOCK BEARING	8	EARLY
	NAP206-18	1-1/8" ID PILLOW BLOCK BEARING	10	2013
	UCP 205-16	1" ID PILLOW BLOCK BEARING	10	MID 2014-
6	5/8-11 X 1-3/4 UNC	HEX BOLT, GRADE 5	20	EARLY
	5/8-11 X 1-3/4 UNC	HEX BOLT, GRADE 5	24	2013-
7	UCP 205-16	1" ID PILLOW BLOCK BEARING, REPLACE ZERK W/PLUG	4	2013-
8	5/8-11 X 1-1/2 UNC	HEX BOLT, GRADE 5	4	
9	KBW010	4" ROLLER WELDMENT	1	EARLY
	KBW010	4" ROLLER WELDMENT	2	2013-
10	FBP6	SPRING CLIP	1	
11	KBW1157	LATCH, GATE	1	
12	31992217	PLASTIC CAP	1	
13	KBW1164	HOLDER, GATE LATCH	1	
14	3/8-16 X 3/4 UNC	HEX BOLT, GRADE 5	2	
15	KBW1169	TAILGATE PIVOT PIN	2	



MODEL #252 BALE WRAPPER HOOP  
AND ROLLERS

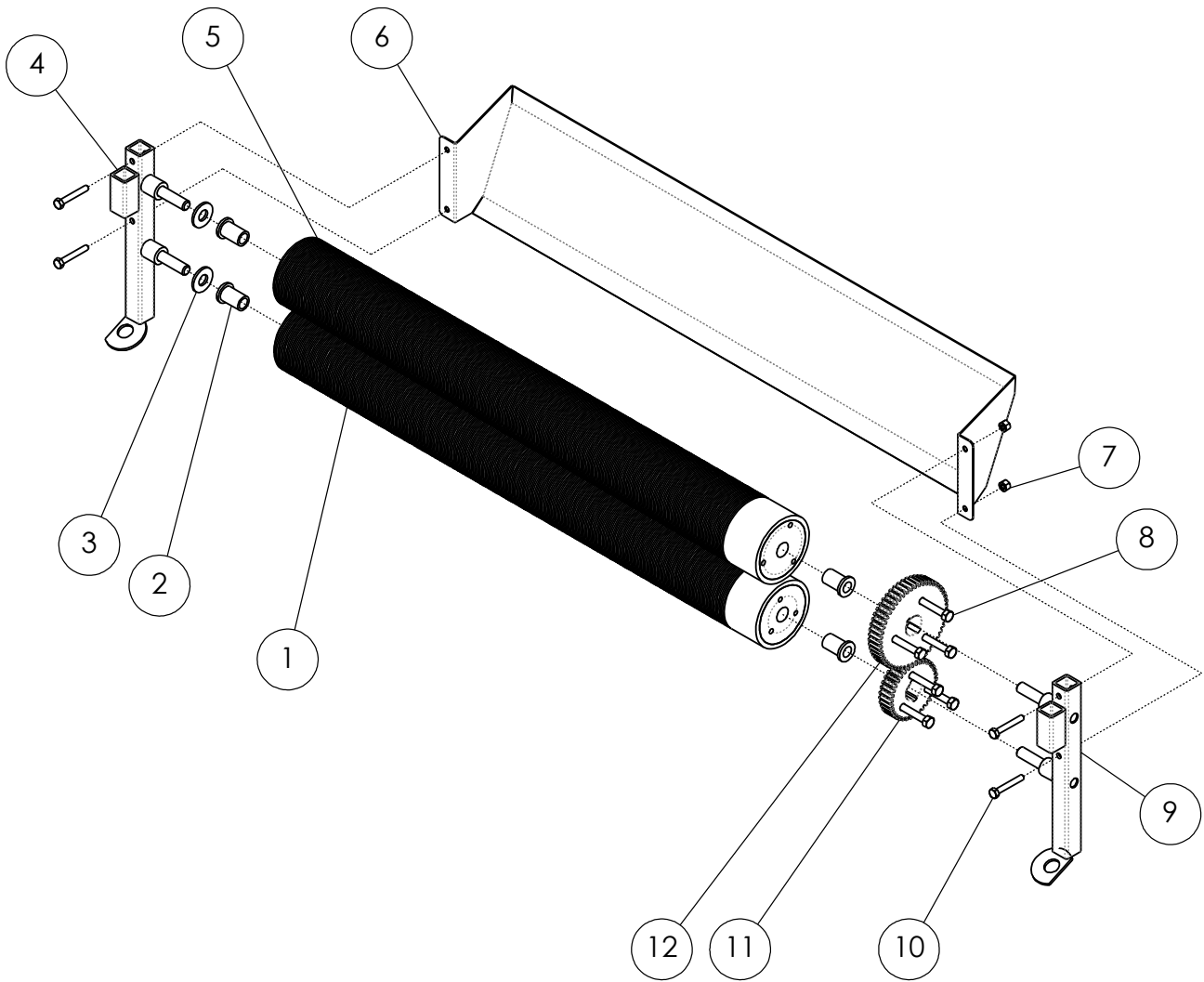
ITEM #	PART NUMBER	DESCRIPTION	QTY.	SERIAL #
1	8x2	RUBBER TIRE CASTER WHEEL	2	
2	KBW014	WRAP HOOP - SEE PAGE #55	1	-20112
	KBW014-13	WRAP HOOP - SEE PAGE #59	1	20113-
3	3/4-10 X 5 RHSN	CARRIAGE BOLT, GRADE 5	2	
4	3/4-10 LN	LOCK NUT, NYLON INSERT	2	
5	KBW1170	HOOP DRIVE WHEEL ASSEMBLY - SEE PAGE #63	2	
6	KBW1093 BRAKE	BRAKE, HOOP	1	
7	3/8-16 X 1-1/2 X 1 UNC	HEX BOLT, THREADED 1", GRADE 5	1	
8	3/8-16 LN	LOCK NUT, NYLON INSERT	1	
9	KBW1090	BRACKET, HOOP DRIVE LONG (WELD ON)	2	
10	KBW1092	BRACKET, HOOP DRIVE SHORT (WELD ON)	2	
11	KBW1089	BRACKET, HOOP IDLER LONG (WELD ON)	2	
12	KBW1091	BRACKET, HOOP IDLER SHORT (WELD ON)	2	



OLD STYLE  
KBW014 HOOP

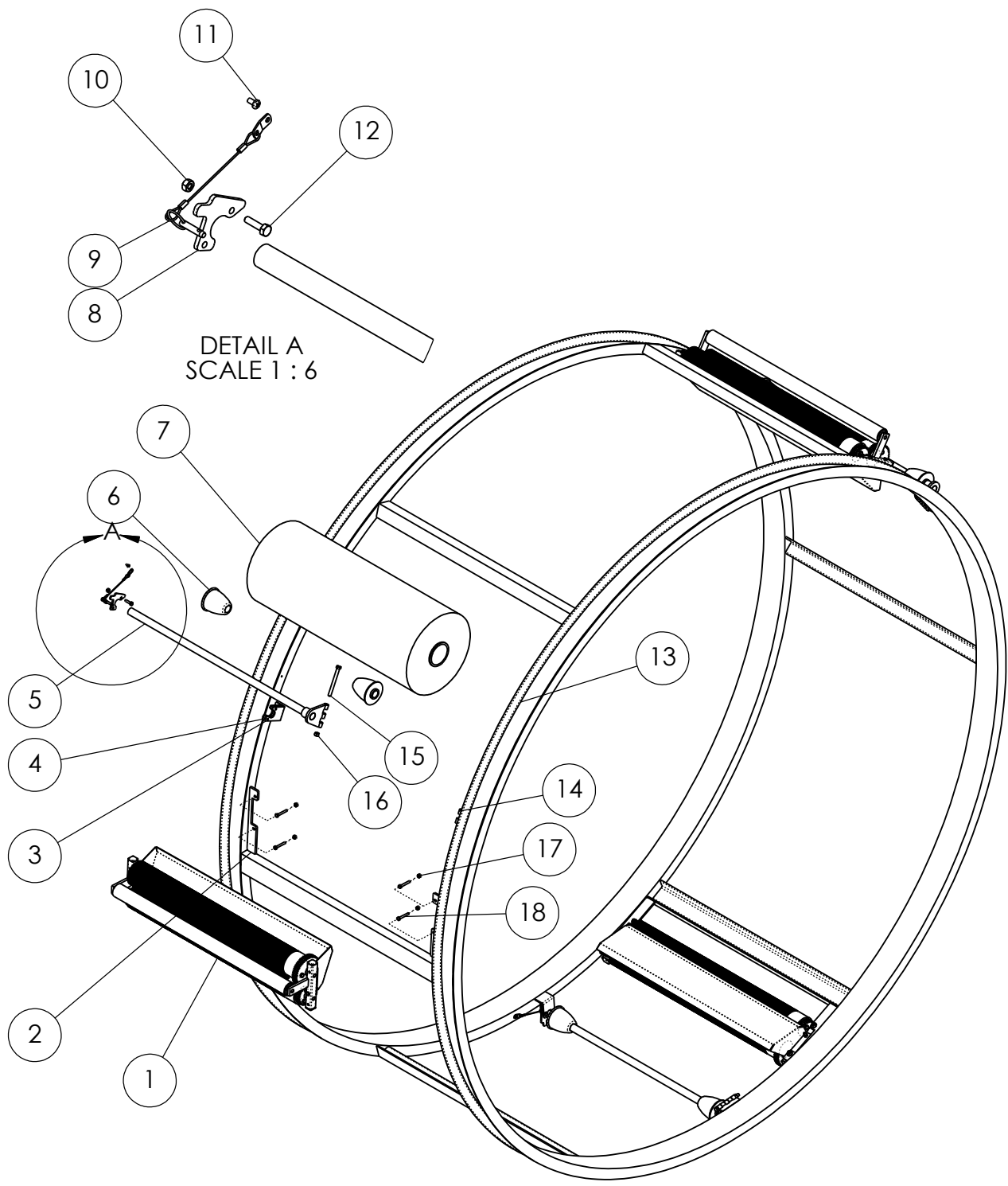


ITEM #	PART NUMBER	DESCRIPTION	QTY.	SERIAL #
1	KBW050	WRAP FEED ASSEMBLY - SEE PAGE #57	3	-20112
2	KBW1160	MOUNT, WRAP DISPENSER	6	-20112
3	KBW1034	SLAM LATCH (WELD ON)	3	
4	KBW1035	LATCH SUPPORT (WELD ON)	3	
5	KBW1155	WRAP ROLL AXLE	3	
6	KBW1020	WRAP CONE	2	
7	FLAVOR SEAL	STRETCH WRAP	1	
8	KBW1036	CATCH, SLAM LATCH	3	
9	94975148	PIN AND LANYARD	3	
10	1/4-20 UNC	HEX NUT, GRADE 5	3	
11	10-24 X 3/8	PAN HEAD SCREW	1	
12	1/4-20 X 1 UNC	HEX BOLT, GRADE 5	3	
13	BELTING	*	2	
14	KBW1040 HINGE	WRAP AXLE HINGE (WELD ON)	3	
15	3/8-16 X 4 UNC	HEX BOLT, GRADE 5	3	
16	3/8-16 UNC	HEX NUT, GRADE 5	3	
17	1/4-20 X 1-1/2 UNC	HEX BOLT, GRADE 5	6	-20112
18	KBW1003	TAB, BUNGEE CORD	6	-20112
19	BUNGEE		6	-20112
20	1/4 FW	FLAT WASHER	6	-20112
21	1/4-20 LN	LOCK NUT, NYLON INSERT	6	-20112
22	GORILLA GLUE™	*	1	



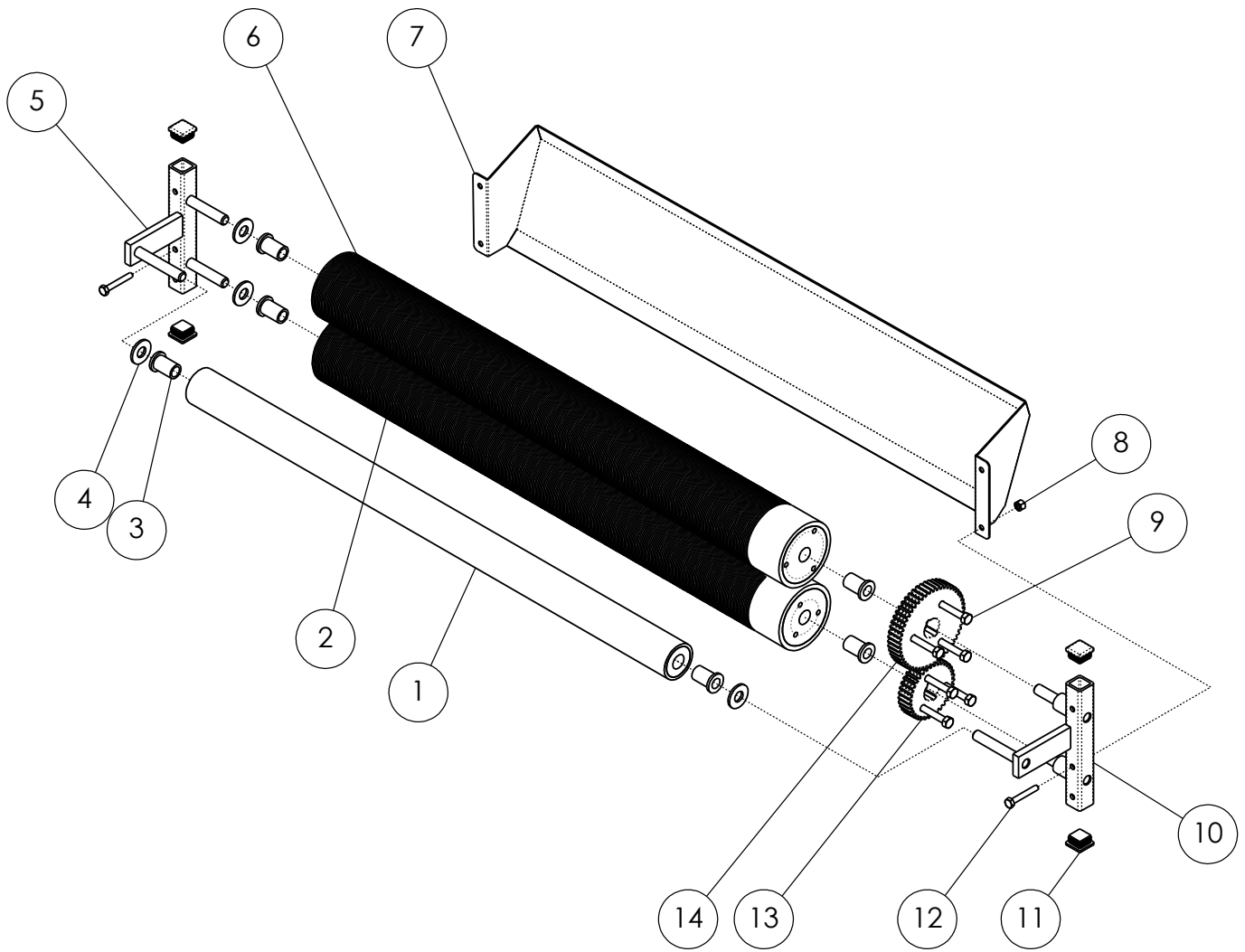
OLD STYLE  
KBW050 WRAP FEED ASSEMBLY

ITEM #	PART NUMBER	DESCRIPTION	QTY.	SERIAL #
1	KBW1129	ROLLER B, 3-1/2"	1	
2	EF081220	FLANGED BRONZE BEARING, 0.5 X 0.75 X 1.25	4	
3	1/2 FW	FLAT WASHER	2	
4	KBW 1201-12 RH	DISPENSER, RIGHT	1	-20112
5	KBW1128	ROLLER A, 3-1/2"	1	
6	KBW1010	GUARD, DISPENSER	1	
7	1/4-20 LN	LOCK NUT, NYLON INSERT	4	
8	5/16 X 2 LAG	LAG SCREW	6	
9	KBW 1201-12 LH	DISPENSER, LEFT	1	-20112
10	1/4-20 X 1-3/4 UNC	HEX BOLT, GRADE 5	4	
11	GD-35	DISPENSER GEAR, 35 TOOTH	1	
12	GD-52	DISPENSER GEAR, 52 TOOTH	1	



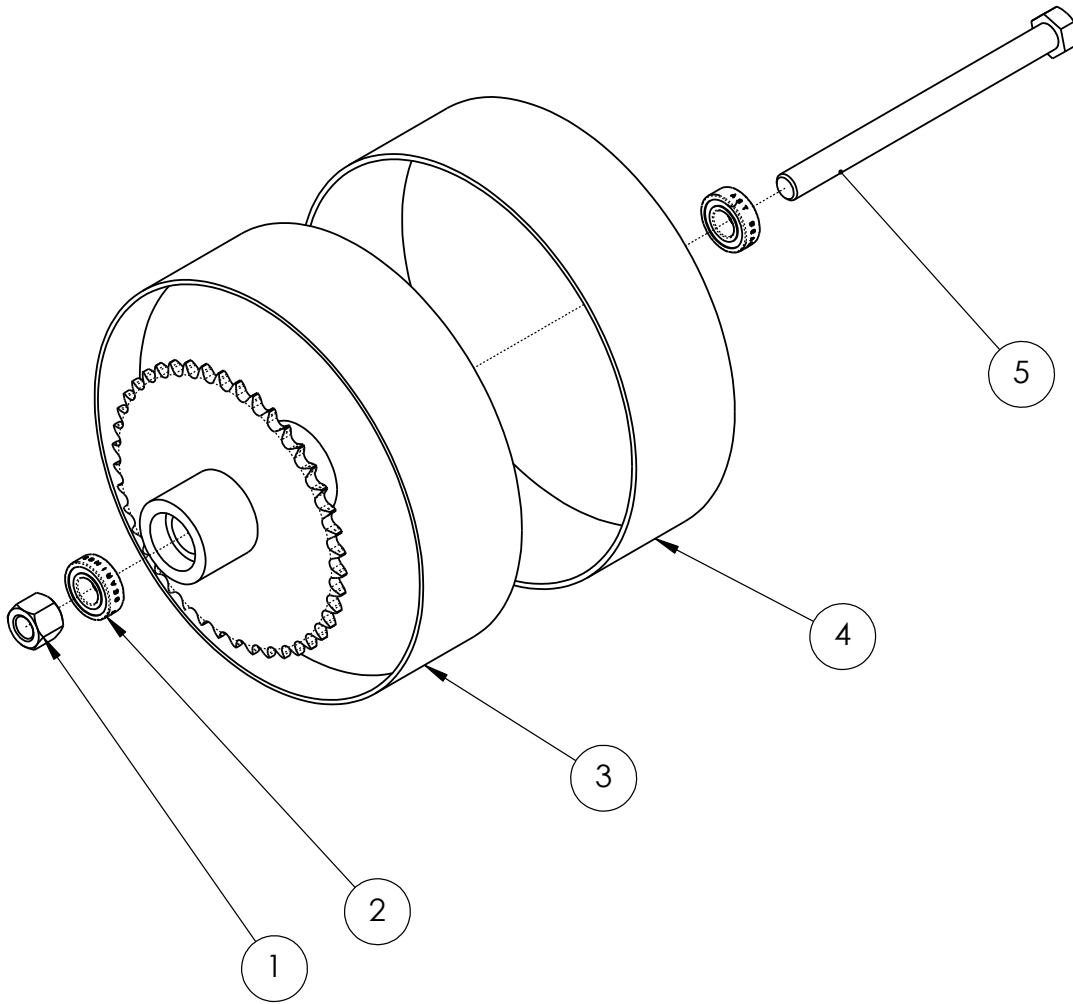
KBW014-13 HOOP

ITEM #	PART NUMBER	DESCRIPTION	QTY.	SERIAL #
1	KBW026	WRAP FEED ASSEMBLY - SEE PAGE #61	3	20113-
2	KBW1113	DISPENSER BRACKET	6	20113-
3	KBW1034	SLAM LATCH (WELD ON)	3	
4	KBW1035	LATCH SUPPORT(WELD ON)	3	
5	KBW1155	WRAP ROLL AXLE	3	
6	KBW1020	WRAP CONE	6	
7	FLAVOR SEAL	STRETCH WRAP	3	
8	KBW1036	CATCH, SLAM LATCH	3	
9	94975148	PIN AND LANYARD	3	
10	1/4-20 UNC	HEX NUT, GRADE 5	3	
11	10-24 X 3/8	PAN HEAD SCREW	3	
12	1/4-20 X 1 UNC	HEX BOLT, GRADE 5	3	
13	BELTING	*	2	
14	KBW1040 HINGE	WRAP AXLE HINGE (WELD ON)	3	
15	3/8-16 X 4 UNC	HEX BOLT, GRADE 5	3	
16	3/8-16 UNC	HEX NUT, GRADE 5	3	
17	1/4-20 LN	LOCK NUT, NYLON INSERT	12	20113-
18	1/4-20 X 1-3/4 UNC	HEX BOLT, GRADE 5	12	20113-
19	KBW1116	WRAP DECAL PLATE (WELD ON)	1	
20	GORILLA GLUE™	*	1	



KBW026 WRAP FEED ASSEMBLY

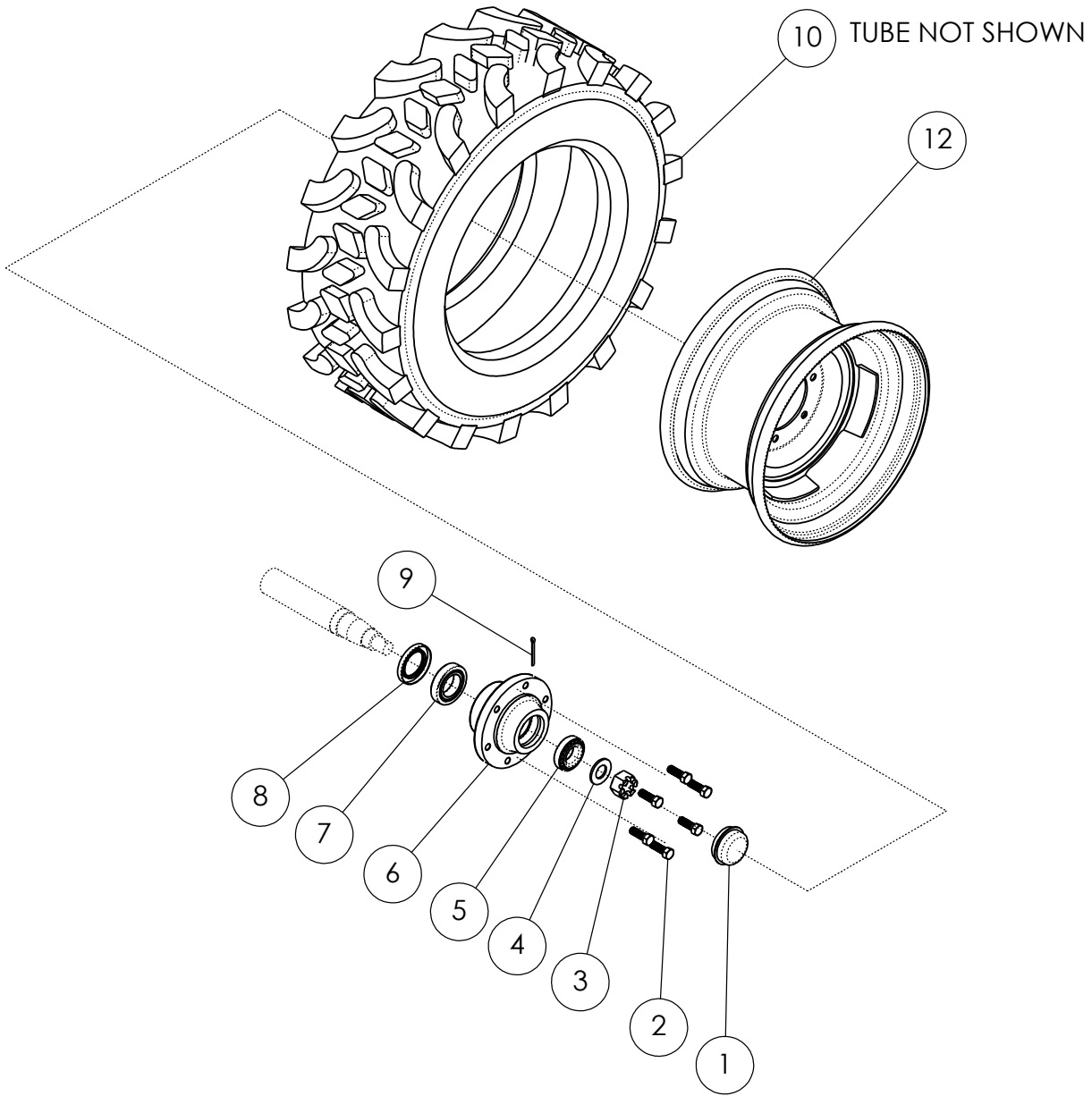
ITEM #	PART NUMBER	DESCRIPTION	QTY.	SERIAL #
1	KBW 1127	WRAP ROLLER, 1-1/2"	1	20113-
2	KBW 1129	ROLLER B, 3-1/2"	1	
3	EF081220	FLANGED BRONZE BEARING, 0.5 X 0.75 X 1.25	6	
4	1/2 FW	FLAT WASHER	4	
5	KBW 1201-LH	DISPENSER, LEFT	1	20113-
6	KBW 1128	ROLLER A, 3-1/2"	1	
7	KBW 1010	GUARD, DISPENSER	1	
8	1/4-20 LN	LOCK NUT, NYLON INSERT	2	
9	5/16 X 2 LAG	LAG SCREW	6	
10	KBW 1201-RH	DISPENSER, RIGHT	1	20113-
11	31992837	TUBE CAP	4	20113-
12	1/4-20 X 1-3/4 UNC	HEX BOLT, GRADE 5	2	
13	GD-35	DISPENSER GEAR, 35 TOOTH	1	
14	GD-52	DISPENSER GEAR, 52 TOOTH	1	



KBW1170 COMPLETE HOOP DRIVE WHEEL ASSEMBLY

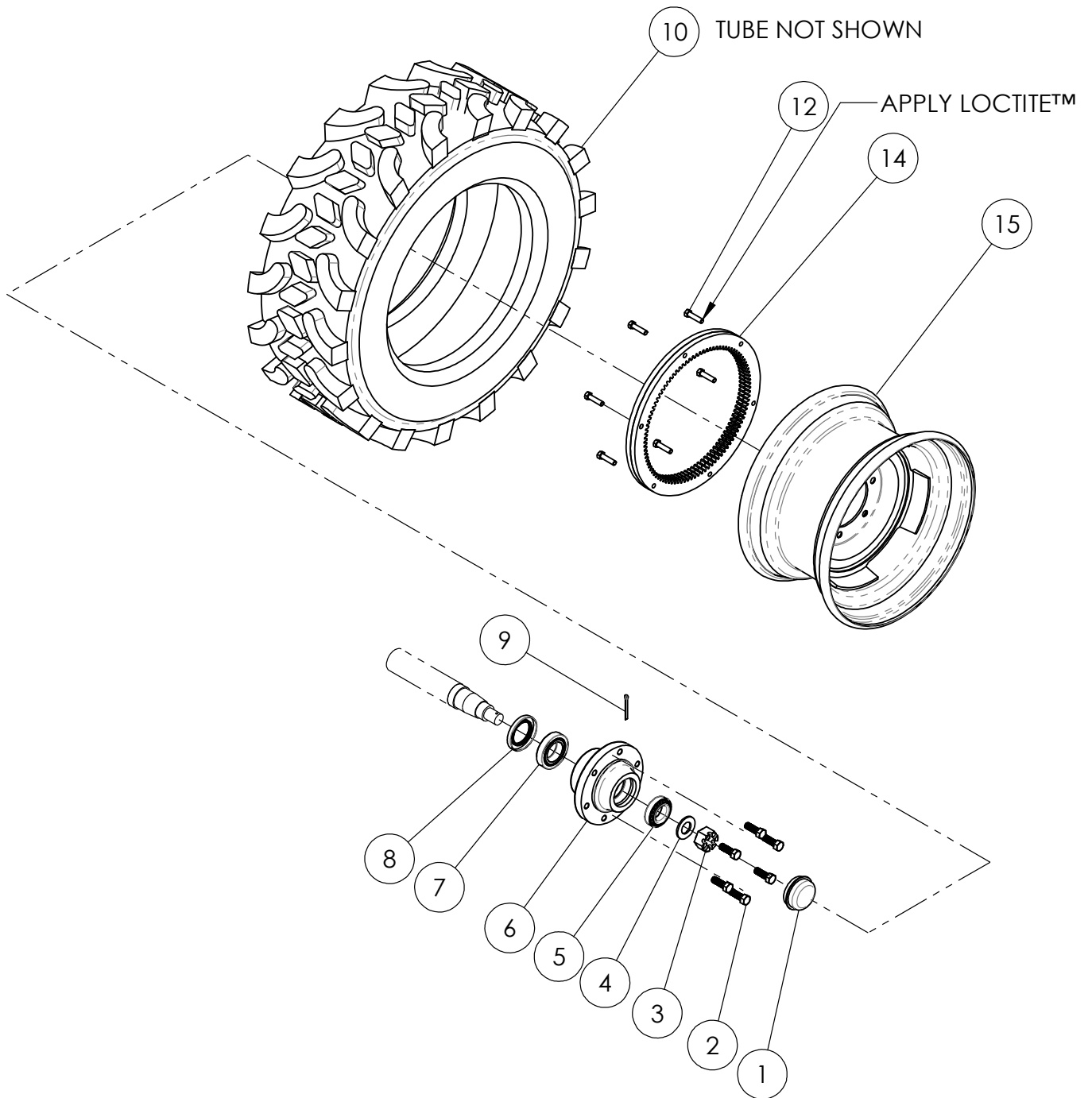


ITEM #	PART NUMBER	DESCRIPTION	QTY	SERIAL #
1	5/8-11 LN	LOCK NUT, NYLON INSERT	1	
2	1623-2RS	ROLLER BEARING	2	
3	KBW1170	TUBE, HOOP DRIVE WHEEL	1	
4	BELTING	*	1	
5	5/8-11 X 8 UNC	HEX BOLT, GRADE 5	1	
6	GORILLA GLUE™	*	1	



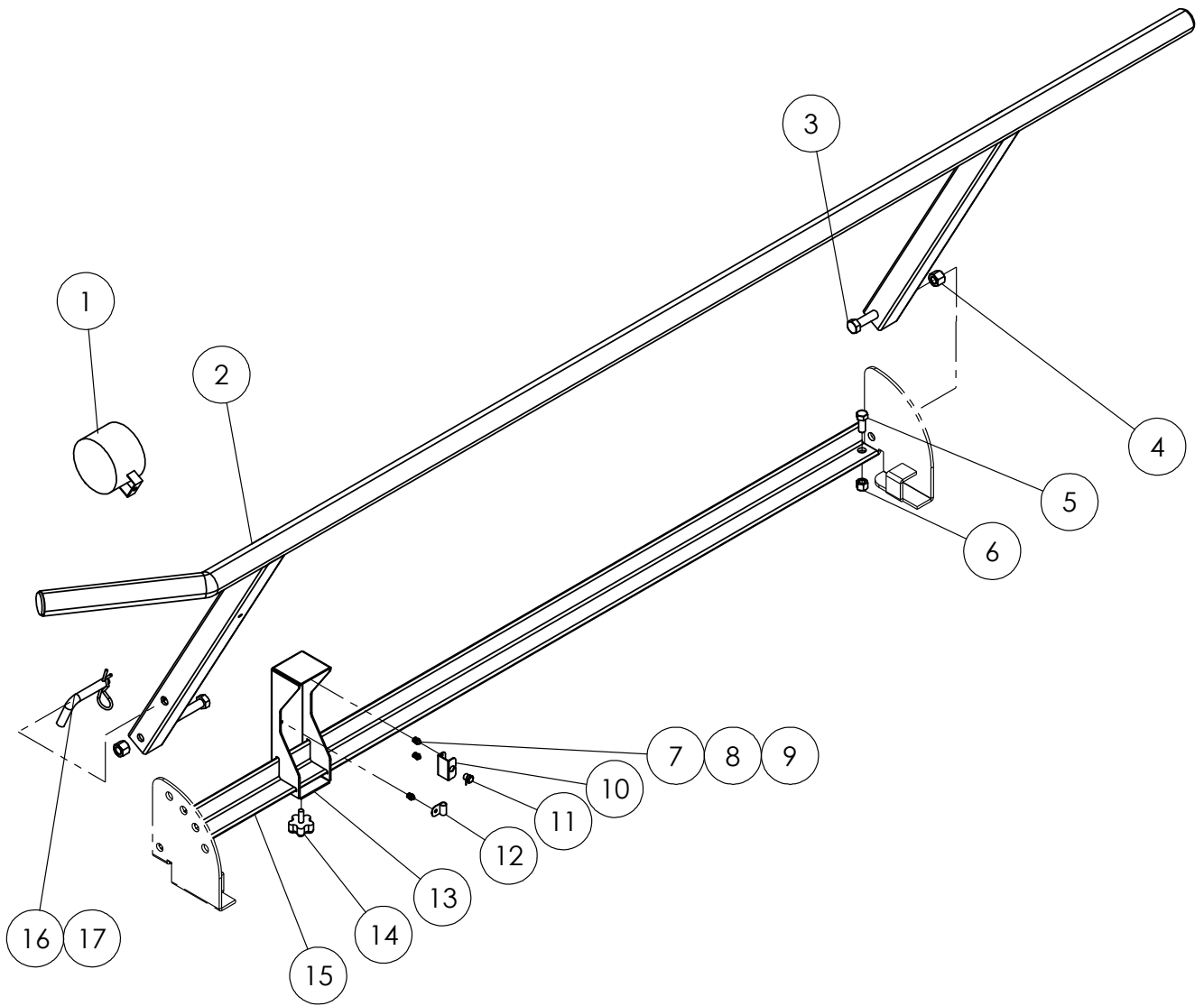
KBW013-RH REAR WHEEL ASSEMBLY

ITEM #	PART NUMBER	DESCRIPTION	QTY.	SERIAL #
1	CAP 2.6	GREASE CAP, 2.56" OD	1	
2	LB 0.5-20	1/2-20 X 1-1/4 LUG BOLT	6	
3	1-12 SLOT	HEX SLOTTED NUT	1	
4	1 FW	FLAT WASHER, 1.062 X 2 X 0.134	1	
5	LM48548-LM48510	TAPERED ROLLER BEARING SET, 1.375 ID X 2.563 OD	1	
6	EM5000-6	6 BOLT HUB	1	
7	LM603049-LM603011	TAPERED ROLLER BEARING SET, 1.781 ID X 3.063 OD	1	
8	203063	GREASE SEAL, 2" ID X 3.066 OD	1	
9	CP-188X2000	3/16 X 2 COTTER PIN	1	
10	10X111461	10-16.5 EXTRA WALL SKIDSTEER TIRE	1	
11	TU552399	16.5" TUBE	1	
12	KBW 1077 DRIVE WHEEL	8.25 X 16.5 RIM AND GEAR PLATE WELDMENT	1	
13	CL0108-098	LUBRIPLATE 3000, HI-TACK MOLYBDENUM GREASE	1	



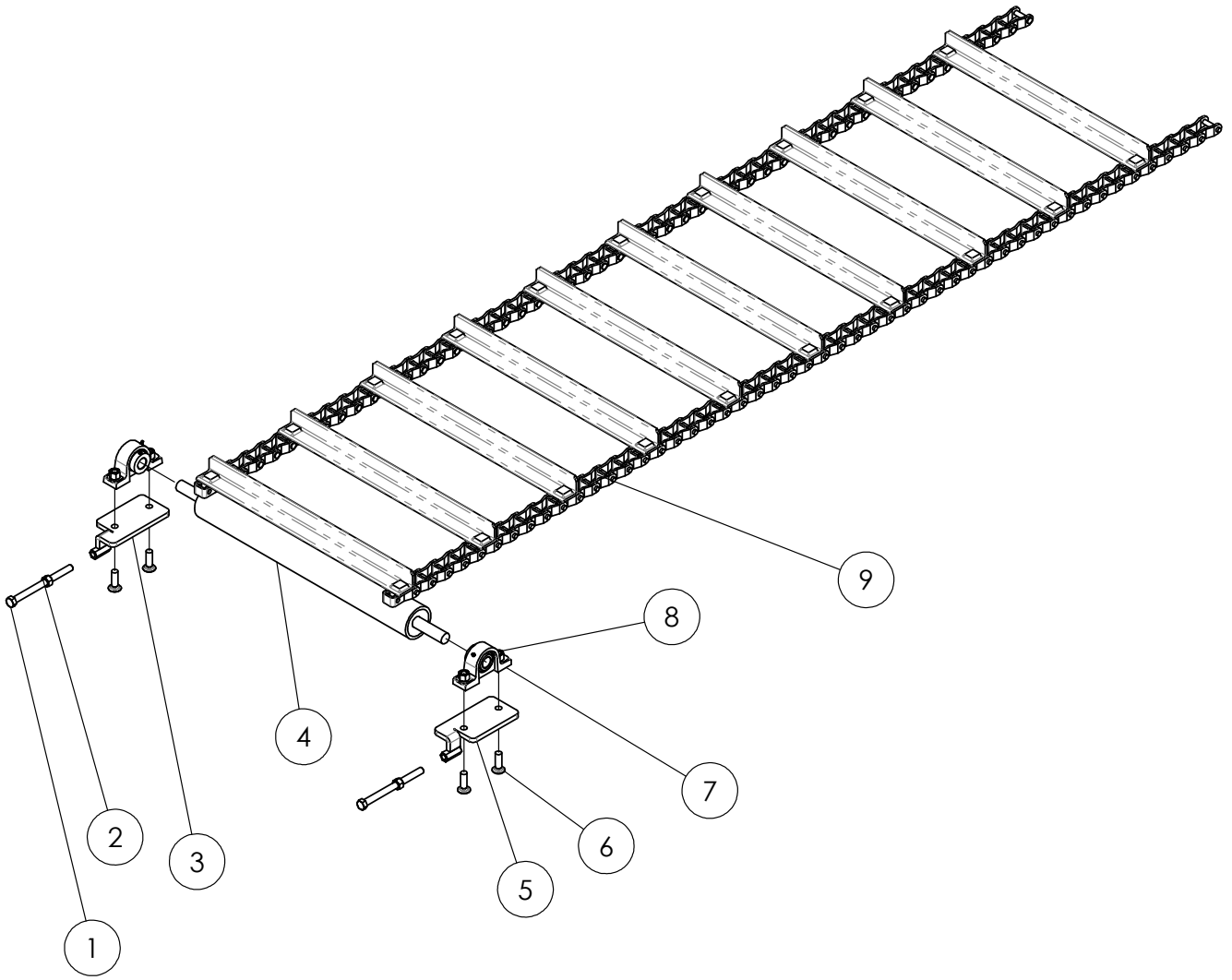
KBW013-RH-PRO2 REAR WHEEL ASSEMBLY, RH DRIVE

ITEM #	PART NUMBER	DESCRIPTION	QTY.	SERIAL #
1	CAP 2.6	GREASE CAP, 2.56" OD	1	
2	LB 0.5-20	1/2-20 X 1-1/4 LUG BOLT	6	
3	1-12 SLOT	HEX SLOTTED NUT	1	
4	1 FW	FLAT WASHER, 1.062 X 2 X 0.134	1	
5	LM48548-LM48510	TAPERED ROLLER BEARING SET, 1.375 ID X 2.563 OD	1	
6	EM5000-6	6 BOLT HUB	1	
7	LM603049-LM603011	TAPERED ROLLER BEARING SET, 1.781 ID X 3.063 OD	1	
8	203063	GREASE SEAL, 2" ID X 3.066 OD	1	
9	CP-188X2000	3/16 X 2 COTTER PIN	1	
10	10X111461	10-16.5 EXTRA WALL SKIDSTEER TIRE	1	
11	TU552399	16.5" TUBE	1	
12	3/8-16 X 1-1/2 UNC	HEX BOLT, GRADE 5	6	
13	LOCTITE™ 242	MEDIUM-STRENGTH THREADLOCKER	1	
14	KBW 1075	DRIVE GEAR	2	
15	KBW 1077 DRIVE WHEEL	8.25 X 16.5 RIM AND GEAR PLATE WELDMENT	1	
16	CL0108-098	LUBRIPLATE 3000, HI-TACK MOLYBDENUM GREASE	1	



KBW017 BALE GUIDE ASSEMBLY  
-RH SHOWN

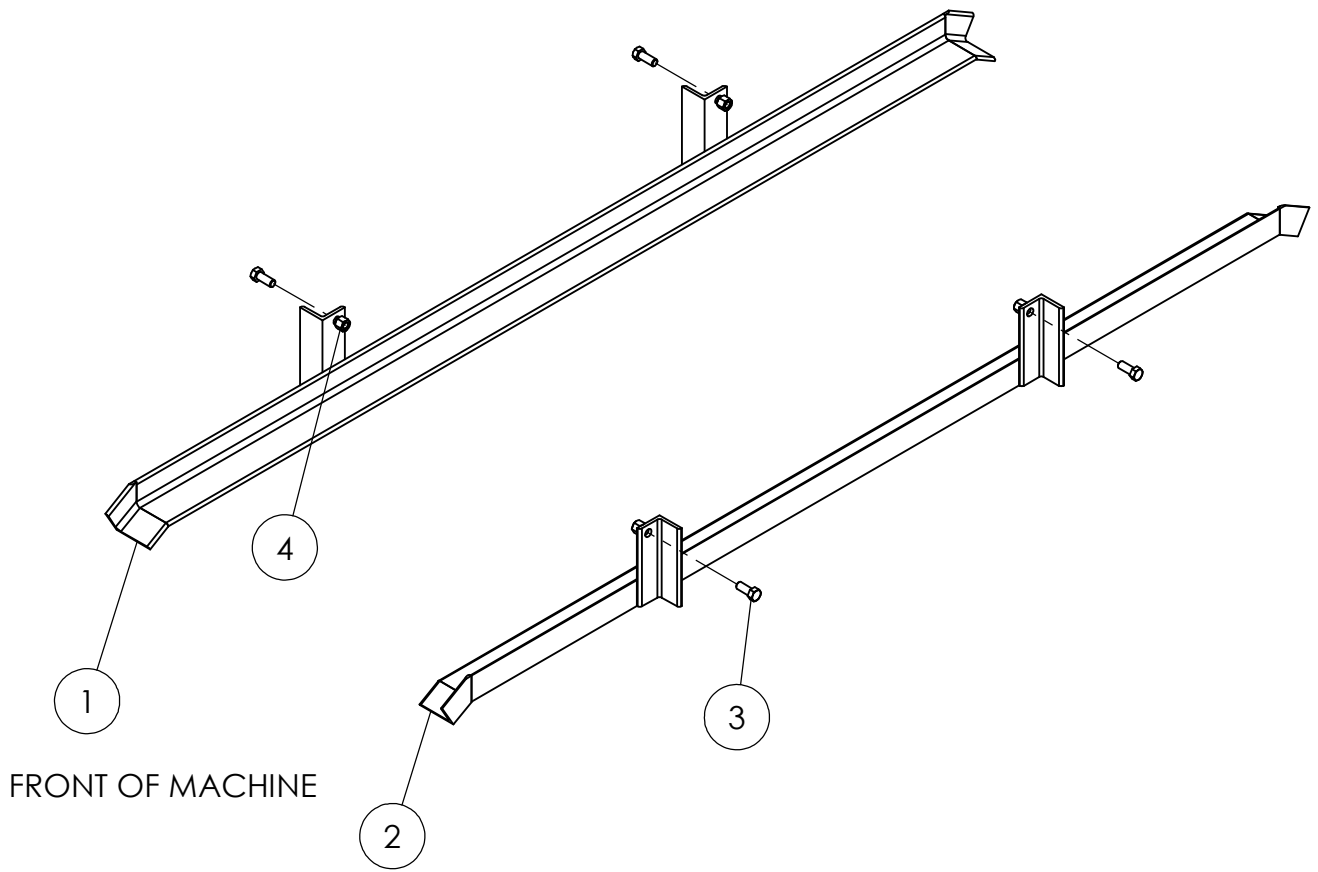
ITEM #	PART NUMBER	DESCRIPTION	QTY.	SERIAL #
1	81260	WORKLIGHT, LED	1	
2	KBW015-RH	RAIL, BALE GUIDE RH	1	
	KBW015-LH	RAIL, BALE GUIDE LH	1	
3	5/8-11 X 3-1/4 UNC	HEX BOLT, GRADE 5	2	
4	5/8-11 LN	LOCK NUT, NYLON INSERT	2	
5	1/2-13 X 1-1/4 UNC	HEX BOLT, GRADE 5	2	
6	1/2-13 LN	LOCK NUT, NYLON INSERT	2	
7	10-32 X 1/2	PAN HEAD SCREW	3	
8	10 TLW	EXTERNAL TOOTH LOCK WASHER	3	
9	10-32 MSN	HEX MACHINE SCREW NUT	3	
10	KBW 1032	TAB, ELECTRIC EYE	1	
11	PB-10NS	PHOTOELECTRIC BEAM SENSOR	1	
		<b>QUANTITY IS PER WRAPPER</b>		
12	AV09383	1/4" LOOM CLAMP	1	
13	KBW 1031	BRACKET, ELECTRIC EYE	1	
14	591370	KNOB	1	
15	KBW 10031	RAIL, ELECTRIC EYE	1	
16	FBEP1024	BENT PIN	1	
17	FBP6	SPRING CLIP	1	



KBW045 BALE WEB ASSEMBLY

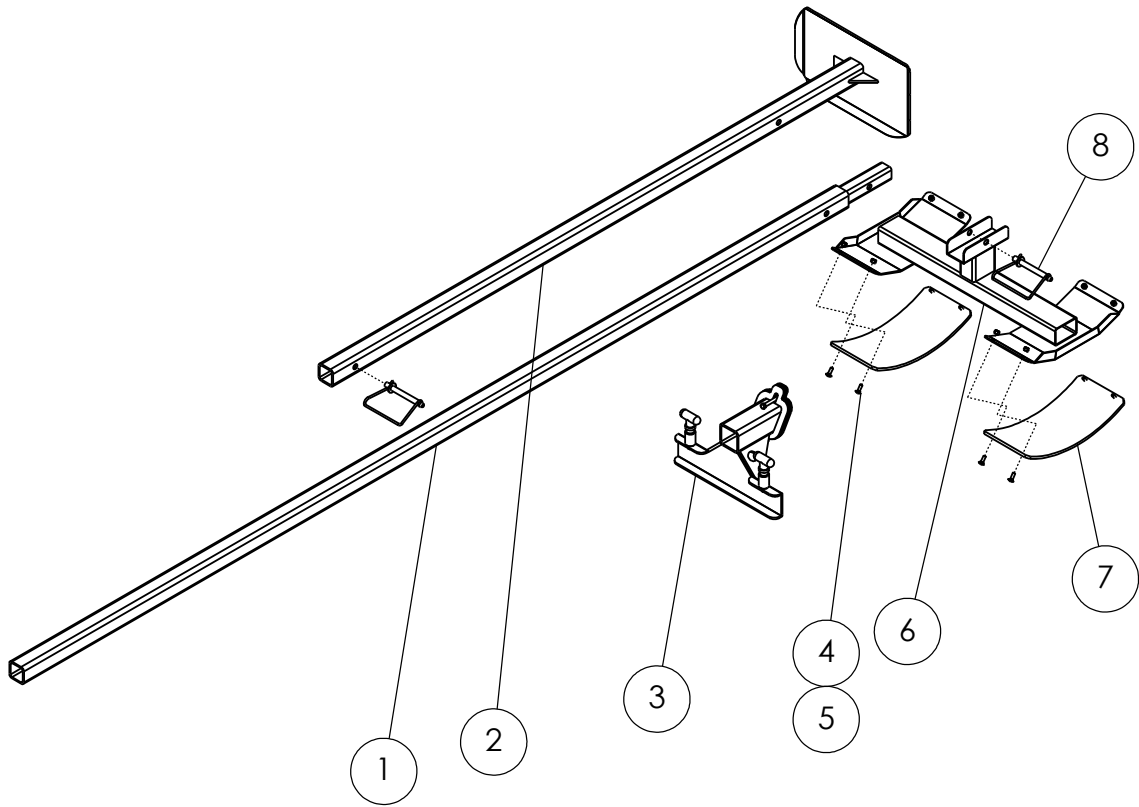


ITEM #	PART NUMBER	DESCRIPTION	QTY.	SERIAL #
1	5/8-11 X 8 FULL	HEX BOLT, FULL-THREAD, GRADE 5	2	
2	5/8-11 UNC	HEX NUT, GRADE 5	2	
3	KBW034-RH	WEB TENSION PLATE	1	
4	KBW05	WEB IDLER ROLLER	1	
5	KBW034-LH	WEB TENSION PLATE	1	
6	5/8-11 X 2 RHSN	CARRIAGE BOLT, GRADE 5	4	
7	NAP 206-18	1-1/8" ID PILLOW BLOCK BEARING	2	
8	5/8-11 LN	LOCK NUT, NYLON INSERT	4	
9	KBW043	WEB CHAIN	1	



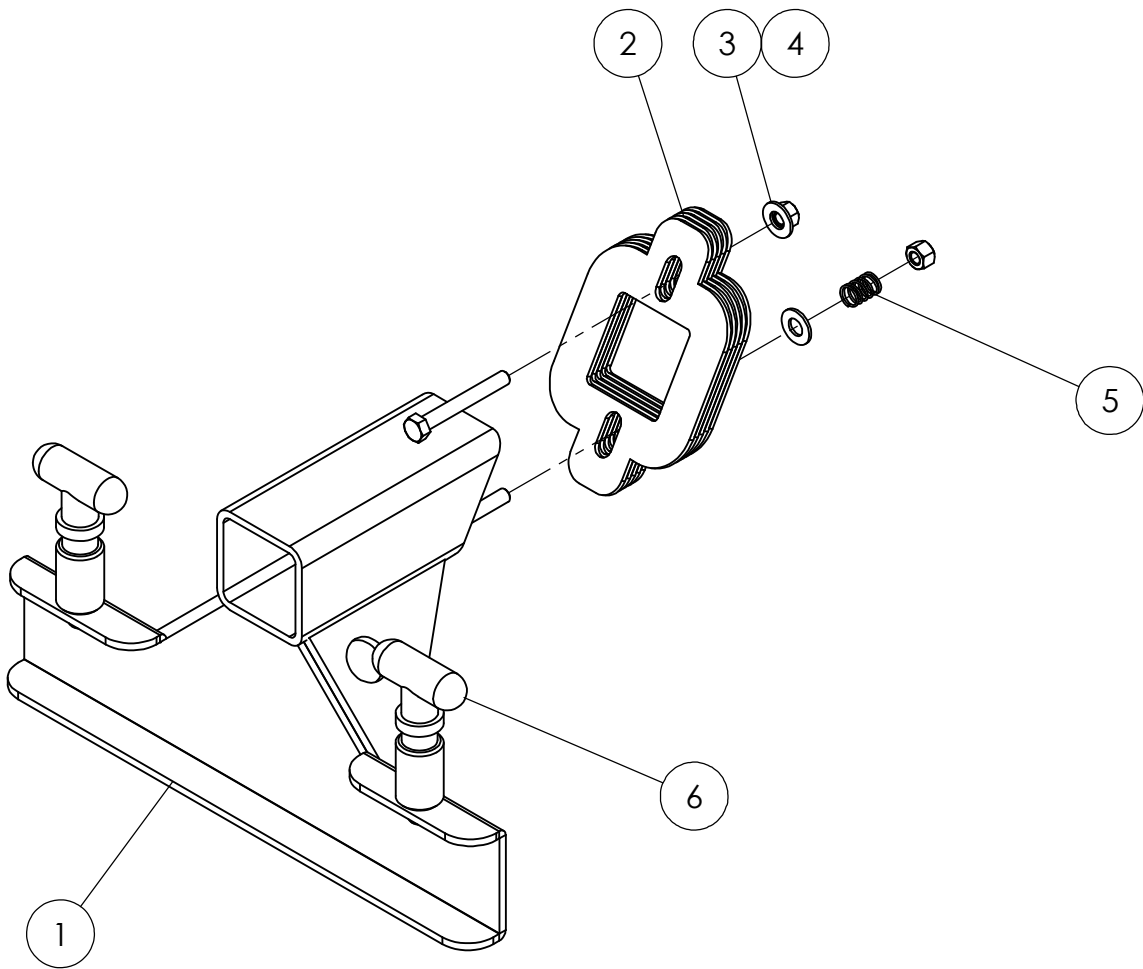
FEED WEB CARRIER

ITEM #	PART NUMBER	DESCRIPTION	QTY.	SERIAL #
1	KBW063-R	WEB CARRIER RAIL, RH	1	
2	KBW063-L	WEB CARRIER RAIL, LH	1	
3	1/2-13 X 1-1/4 UNC	HEX BOLT, GRADE 5	4	
4	1/2-13 LN	LOCK NUT, NYLON INSERT	4	



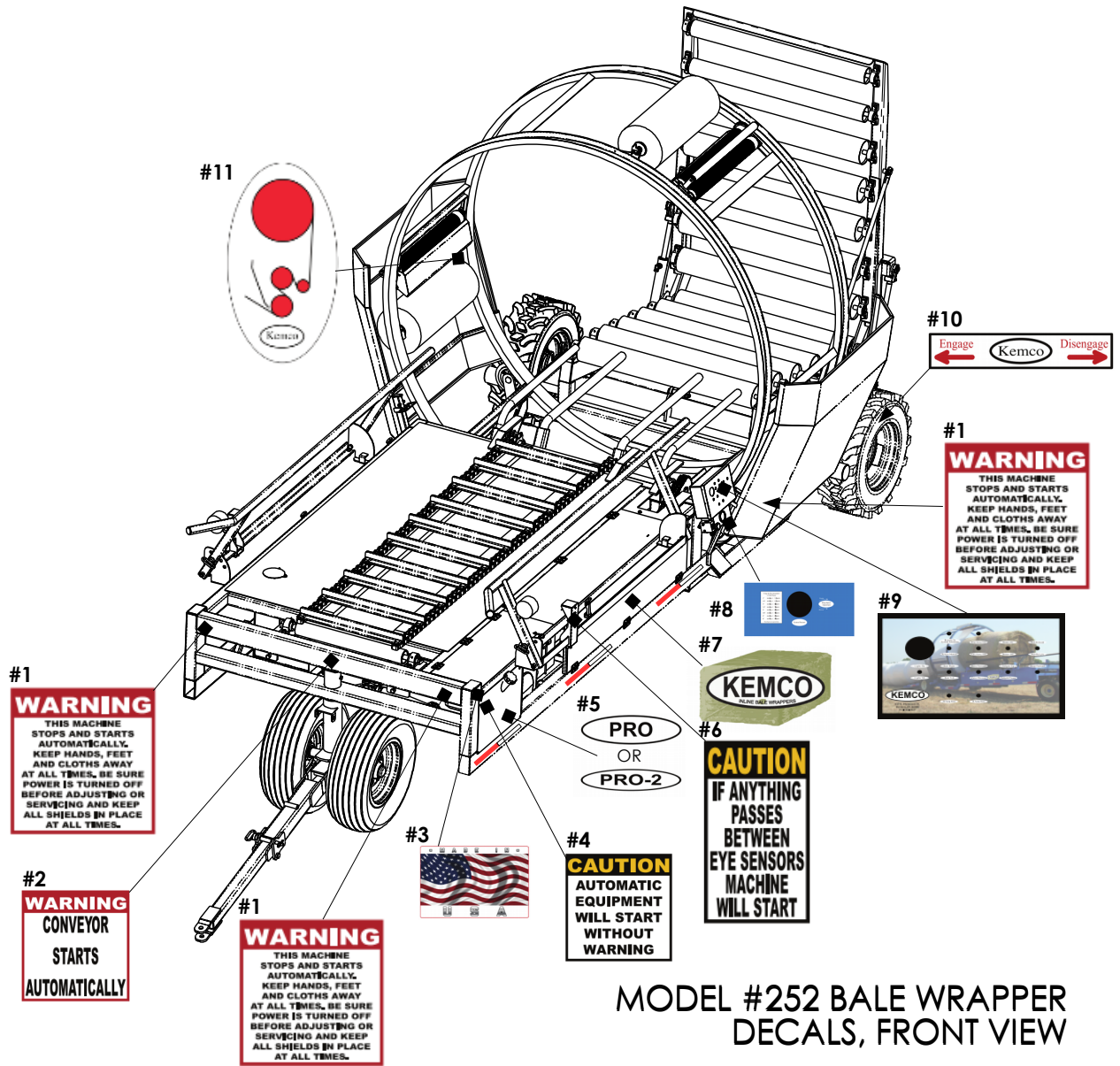
KBW016 CLEAN OUT RAM

ITEM #	PART NUMBER	DESCRIPTION	QTY.	SERIAL #
1	KBW10077	CLEAN OUT TUBE EXTENSION	1	
2	KBW10020	CLEAN OUT TUBE	1	
3	KBW020	PUSH RAM BASE - SEE PAGE #77	1	
4	1/4 X 3/4 RHSN	CARRIAGE BOLT, GRADE 5	8	
5	1/4-20 LN	LOCK NUT, NYLON INSERT	8	
6	KBW021	CLEANOUT STANDOFF	1	
7	KBW1257	SKID PAD	2	
8	FLPU828	SAFETY PIN, 1/2 X 3-1/2	2	



KBW020 CLEANOUT RAM BASE

ITEM #	PART NUMBER	DESCRIPTION	QTY. SERIAL #
1	KBW 1012	HOOKUP, CLEAN OUT CHAIN	1
2	KBW 1015	CLAMP, CLEAN OUT TUBE	5
3	3/8 FW	FLAT WASHER	2
4	5/16-18 LN	LOCK NUT, NYLON INSERT	2
5	91	COMPRESSION SPRING	1
6	09300088	QUICK RELEASE PIN	2



#1  
**WARNING**  
 THIS MACHINE STOPS AND STARTS AUTOMATICALLY. KEEP HANDS, FEET AND CLOTHS AWAY AT ALL TIMES. BE SURE POWER IS TURNED OFF BEFORE ADJUSTING OR SERVICING AND KEEP ALL SHIELDS IN PLACE AT ALL TIMES.

#2  
**WARNING**  
 CONVEYOR STARTS AUTOMATICALLY

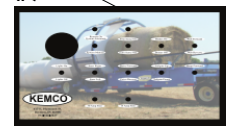
#1  
**WARNING**  
 THIS MACHINE STOPS AND STARTS AUTOMATICALLY. KEEP HANDS, FEET AND CLOTHS AWAY AT ALL TIMES. BE SURE POWER IS TURNED OFF BEFORE ADJUSTING OR SERVICING AND KEEP ALL SHIELDS IN PLACE AT ALL TIMES.



#4  
**CAUTION**  
 AUTOMATIC EQUIPMENT WILL START WITHOUT WARNING

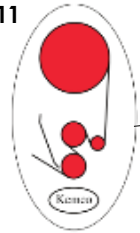
#5  
 PRO  
 OR  
 PRO-2

#6  
**CAUTION**  
 IF ANYTHING PASSES BETWEEN EYE SENSORS MACHINE WILL START



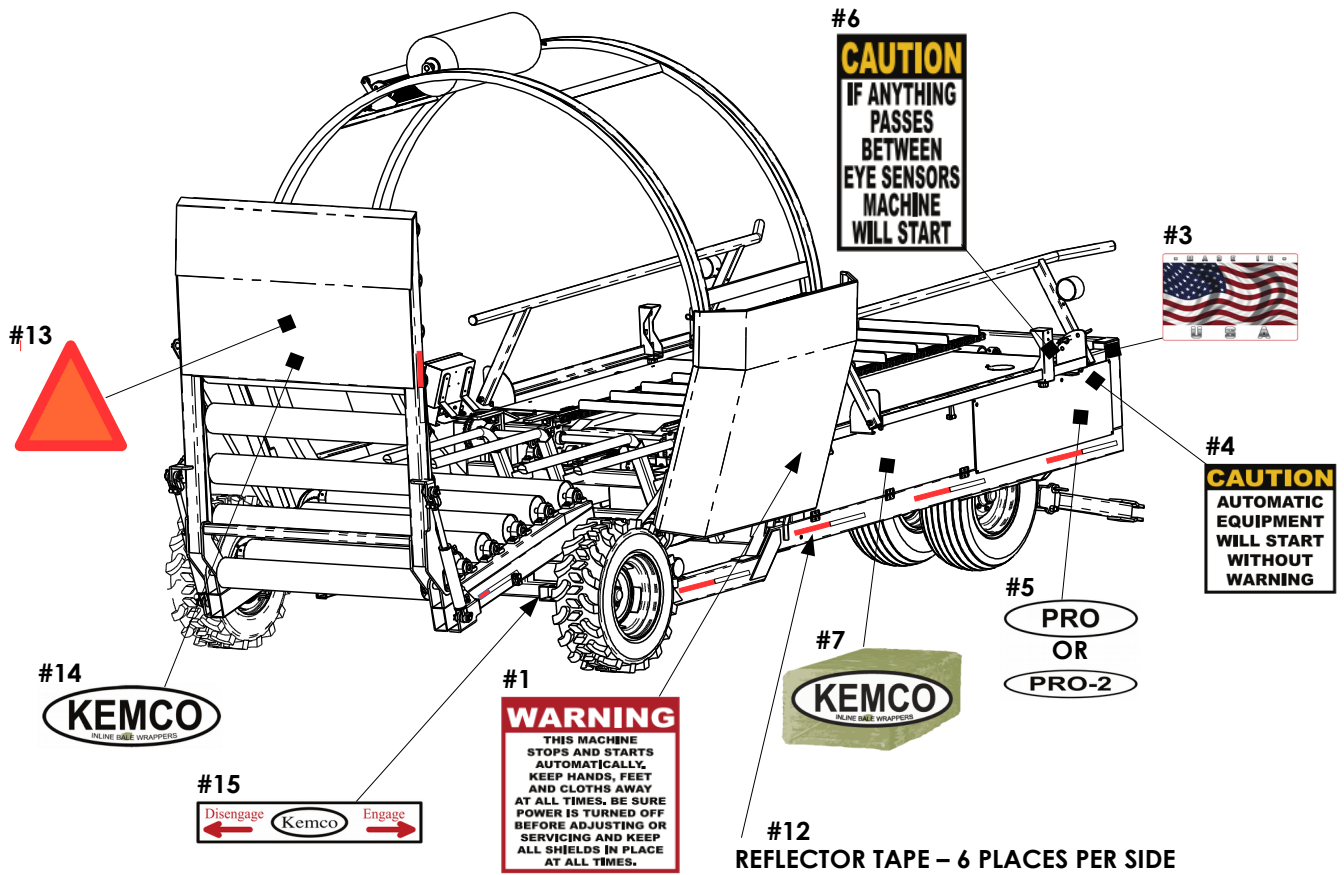
#1  
**WARNING**  
 THIS MACHINE STOPS AND STARTS AUTOMATICALLY. KEEP HANDS, FEET AND CLOTHS AWAY AT ALL TIMES. BE SURE POWER IS TURNED OFF BEFORE ADJUSTING OR SERVICING AND KEEP ALL SHIELDS IN PLACE AT ALL TIMES.

#10  
 Engage KEMCO Disengage





ITEM #	PART NUMBER	DESCRIPTION	QTY	SERIAL #
1	20009-001	<b>WARNING</b> – KEEP SHIELDS IN PLACE	3	
2	20007-001	<b>WARNING</b> – CONVEYOR	1	
3	20015-001	MADE IN USA	1	
4	20005-001	<b>CAUTION</b> – AUTOMATIC EQUIPMENT	1	
5		MODEL NAME	1	
		USE PRO-2 ON DUAL DRIVE UNITS		
6	20006-001	<b>CAUTION</b> – EYE SENSORS	1	
7	20018-001	LOGO ON SQUARE BALE	1	
8	20023-001	TENSION VALVE LABEL	1	
9	20012-001	CONTROL BOX LABEL	1	
10	20022-001	DRIVE HANDLE ENGAGE	1	
11	20211-001	WRAP FILM FEEDING DIAGRAM	3	
12		DOT REFLECTOR TAPE	6	
		SEE REAR VIEW FOR LOCATIONS		



MODEL #252 BALE WRAPPER  
DECALS, REAR VIEW

ITEM #	PART NUMBER	DESCRIPTION	QTY	SERIAL #
1	20009-001	<b>WARNING</b> –KEEP SHIELDS IN PLACE	1	
2	20007-001	WARNING – CONVEYOR	NR	
3	20015-001	MADE IN USA	1	
4	20005-001	<b>CAUTION</b> – AUTOMATIC EQUIPMENT	1	
5		MODEL NAME	1	
		USE PRO-2 ON DUAL DRIVE UNITS		
6	20006-001	<b>CAUTION</b> – EYE SENSORS	1	
7	20018-001	LOGO ON SQUARE BALE	1	
8		TENSION VALVE LABEL	NR	
9		CONTROL BOX LABEL	NR	
10		DRIVE HANDLE ENGAGE	NR	
11		WRAP FILM FEEDING DIAGRAM	NR	
12		DOT REFLECTOR TAPE	6	
13	SMV1	SLOW-MOVING EMBLEM	1	
14		SMALL LOGO	1	
15	20024-001	DUAL DRIVE HANDLE ENGAGE	1	

Printed in U.S.A.  
Version 05/2015